

Manufacturer/Supplier:

WUXI DONGLIN SCI&TECH DEVELOPMENT CO., LTD

Address: A1-203 Mingpin CityII, No.8 Xihudong Road, Liangxi District
Wuxi Jiangsu Province, China

TELE: 86-510-82732223

FAX: 86-510-82720101-8014

Web : www.dldevelop.com

Email: info@dldevelop.com.cn service@dldevelop.com.cn

Product name: Rabbit anti-ADAR2 Antibody

Catalog: DL90017A

Synonyms: ADAR2; DRADA2; RED1; Double-stranded RNA-specific editase 1; RNA-editing deaminase 1; RNA-editing enzyme 1; dsRNA adenosine deaminase

Immunogen: KLH-conjugated synthetic peptide encompassing a sequence within the center region of human ADAR2. The exact sequence is proprietary.

Form: Liquid

Concentration: 1mg/mL

Size: 100 ul/50 ul

Host: Rabbit

Reactivity:

Application: WB, IHC, IF/IC

Human, Mouse, Rat, Chicken, Zebra
fish

Clonality: Polyclonal

Dilution: WB (1/500 - 1/1000),
IHC (1/100 - 1/200), IF/IC (1/100 -
1/500)

Entrez Gene: 104/110532/25367

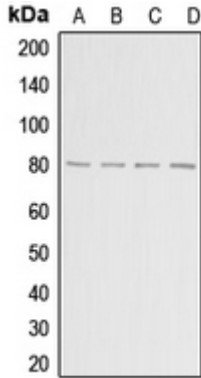
SwissProt: P78563/Q91ZS8/P51400

Purification: The antibody was purified by immunogen affinity
chromatography.

Buffer: Liquid in 0.42% Potassium phosphate, 0.87%
Sodium chloride, pH 7.3, 30% glycerol, and 0.01%
sodium azide.

WB description:

Western blot analysis of ADAR2 expression in HepG2 (A), MCF7
(B), mouse brain (C), rat brain (D) whole cell lysates.

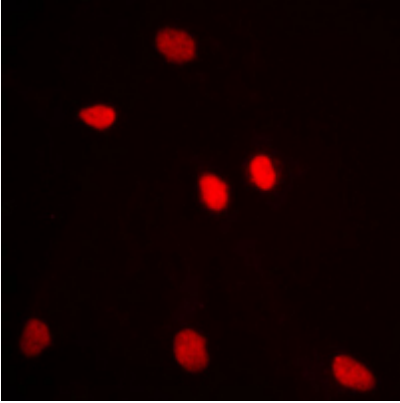


IHC description:

Immunohistochemical analysis of ADAR2 staining in human brain formalin fixed paraffin embedded tissue section. The section was pre-treated using heat mediated antigen retrieval with sodium citrate buffer (pH 6.0). The section was then incubated with the antibody at room temperature and detected using an HRP conjugated compact polymer system. DAB was used as the chromogen. The section was then counterstained with haematoxylin and mounted with DPX.

IF/ICC description:

Immunofluorescent analysis of ADAR2 staining in MCF7 cells. Formalin-fixed cells were permeabilized with 0.1% Triton X-100 in TBS for 5-10 minutes and blocked with 3% BSA-PBS for 30 minutes at room temperature. Cells were probed with the primary antibody



Storage:

Store at -20°C. Avoid repeated freeze / thaw cycles.