

Manufacturer/Supplier:

WUXI DONGLIN SCI&TECH DEVELOPMENT CO., LTD

Address: A1-203 Mingpin CityII, No.8 Xihudong Road, Liangxi District
Wuxi Jiangsu Province, China

TELE: 86-510-82732223

FAX: 86-510-82720101-8014

Web : www.dldevelop.com

Email: info@dldevelop.com.cn service@dldevelop.com.cn

Product name: Rabbit anti-CD156c Antibody

Catalog: DL90016A

Synonyms: KUZ; MADM; Disintegrin and metalloproteinase domain-containing protein 10; ADAM 10; CDw156; Kuzbanian protein homolog; Mammalian disintegrin-metalloprotease; CD156c

Immunogen: KLH-conjugated synthetic peptide encompassing a sequence within the center region of human CD156c. The exact sequence is proprietary.

Form: Liquid

Concentration: 1mg/mL

Size: 100 ul/50 ul

Host: Rabbit

Reactivity:

Application: WB

Human, Mouse, Bovine, Pig

Clonality: Polyclonal

Dilution: WB (1/500 - 1/1000)

Entrez Gene: 102/11487

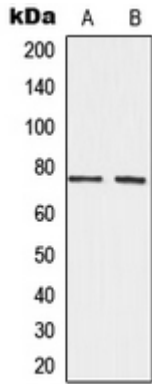
SwissProt: O14672/O35598

Purification: The antibody was purified by immunogen affinity chromatography.

Buffer: Liquid in 0.42% Potassium phosphate, 0.87% Sodium chloride, pH 7.3, 30% glycerol, and 0.01% sodium azide.

WB description:

Western blot analysis of CD156c expression in HeLa (A), SP2/0 (B) whole cell lysates.



Storage:

Store at -20°C. Avoid repeated freeze / thaw cycles.