

Manufacturer/Supplier:

WUXI DONGLIN SCI&TECH DEVELOPMENT CO., LTD

Address: A1-203 Mingpin CityII, No.8 Xihudong Road, Liangxi District
Wuxi Jiangsu Province, China

TELE: 86-510-82732223

FAX: 86-510-82720101-8014

Web : www.dldevelop.com

Email: info@dldevelop.com.cn service@dldevelop.com.cn

Product name: Anti-Rat CD3 Monoclonal Antibody(PE Conjugated)

Catalog: DL22318F

Synonyms: T-cell surface glycoprotein CD3 δ , γ , ϵ , and ζ chains, CD3 Complex, T3, CD3

Background: CD3 is a complex composed of δ , γ , ϵ , and ζ chains. They are 20-25 kD members of the immunoglobulin superfamily and associated with the T cell receptor (TCR). CD3 is expressed on thymocytes, peripheral T cells, some NK-T cells, and dendritic epidermal T cells. CD3 is involved in antigen recognition, signal transduction, and T cell activation.

Form: Liquid

Isotype: Mouse IgG3, κ

Size: 25 μ g/100 μ g

Host: Mouse

Reactivity: Rat

Application: FCM

Concentration: 0.2 mg/mL

Conjugation: PE

SwissProt: P19377,Q64159,D4A5M2

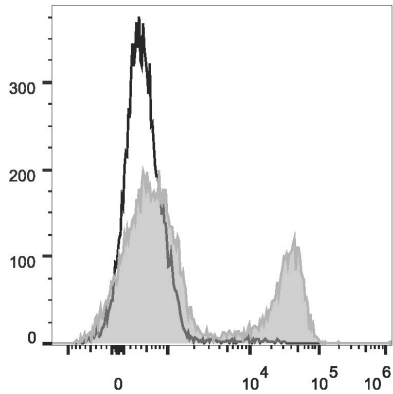
Buffer: Phosphate buffered solution, pH 7.2, containing 0.09% stabilizer and 1% protein protectant.

Recommended Use:

Each lot of this antibody is quality control tested by flow cytometric analysis. Please check your vial before the experiment. Since applications vary, the appropriate dilutions must be determined for individual use. We suggest each investigator should titrate the reagent to obtain optimal results [The recommended concentration is 0.1-1 $\mu\text{g}/10^6$ cells in 100 μL volume].

Data:

Rat splenocytes are stained with Anti-Rat CD3 Monoclonal Antibody(PE Conjugated)[Used at 0.05 $\mu\text{g}/10^6$ cells dilution](filled gray histogram). Unstained splenocytes (empty black histogram) are used as control.



Storage:

Keep as concentrated solution.

Store at 2~8°C and protected from prolonged exposure to light. Do not freeze.

This product is guaranteed up to one year from purchase.