

**Manufacturer/Supplier:**

WUXI DONGLIN SCI&TECH DEVELOPMENT CO., LTD

**Address:** A1-203 Mingpin CityII, No.8 Xihudong Road, Liangxi District  
Wuxi Jiangsu Province, China

TELE: 86-510-82732223

FAX: 86-510-82720101-8014

**Web :** [www.dldevelop.com](http://www.dldevelop.com)

Email: [info@dldevelop.com.cn](mailto:info@dldevelop.com.cn)    [service@dldevelop.com.cn](mailto:service@dldevelop.com.cn)

**Product name:** Anti-Rat CD3 Monoclonal Antibody(FITC  
Conjugated)

**Catalog:** DL22313F

**Synonyms:** T-cell surface glycoprotein CD3  $\delta$ ,  $\gamma$ ,  $\epsilon$ , and  $\zeta$   
chains, CD3 Complex, T3, CD3

**Background:** CD8a is a 32 kD glycoprotein also known as T8, Lyt2, Ly-2, and CD8 $\alpha$ . CD8a is a member of the immunoglobulin superfamily expressed on most thymocytes, subset of mature T cells, most NK cells, macrophages, and some activated CD4<sup>+</sup> T cells (not resting). CD8a forms heterodimers with the CD8 $\beta$  chain (CD8b) on the surface of most thymocytes, while mature peripheral T lymphocytes express almost exclusively the CD8  $\alpha\beta$  heterodimer. Intestinal intraepithelial lymphocytes express CD8a

without CD8b. CD8 is an antigen co-receptor on T cells that interacts with MHC class I on antigen-presenting cells or epithelial cells. CD8 participates in T cell activation through its association with the T cell receptor complex and protein tyrosine kinase lck (p56lck).

**Form:** Liquid

**Isotype:** Mouse IgG3,  $\kappa$

**Size:**

50Tests/100Tests/100Tests $\times$ 2

**Host:** Mouse

**Reactivity:** Rat

**Application:** FCM

**Concentration:** 5  $\mu$ L

**Conjugation:** FITC

**SwissProt:** P19377,Q64159,D4A5M2

**Buffer:** Phosphate buffered solution, pH 7.2, containing 0.09% stabilizer and 1% protein protectant.

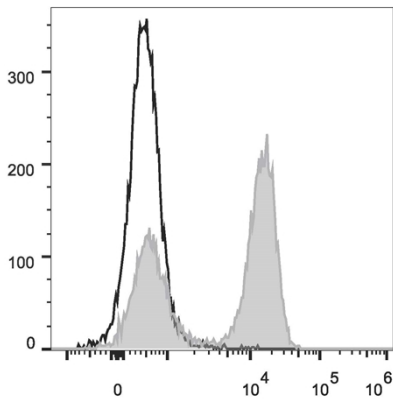
### Recommended Use:

Each lot of this antibody is quality control tested by flow cytometric analysis. The amount of the reagent is suggested to be used 5  $\mu$ L of antibody per test (million cells in 100  $\mu$ L staining volume or per 100  $\mu$ L of whole blood). Please check your vial before the experiment.

Since applications vary, the appropriate dilutions must be determined for individual use.

**Data:**

Rat splenocytes are stained with Anti-Rat CD3 Monoclonal Antibody(FITC Conjugated)(filled gray histogram). Unstained splenocytes (empty black histogram) are used as control.



**Storage:**

Keep as concentrated solution.

Store at 2~8°C and protected from prolonged exposure to light. Do not freeze.

This product is guaranteed up to one year from purchase.