

Manufacturer/Supplier:

WUXI DONGLIN SCI&TECH DEVELOPMENT CO., LTD

Address: A1-203 Mingpin CityII, No.8 Xihudong Road, Liangxi District
Wuxi Jiangsu Province, China

TELE: 86-510-82732223

FAX: 86-510-82720101-8014

Web : www.dldevelop.com

Email: info@dldevelop.com.cn service@dldevelop.com.cn

Product name: Anti-Mouse IgD Monoclonal Antibody(PE
Conjugated)

Catalog: DL22059F

Synonyms: Immunoglobulin heavy constant delta, IGHD, Ig delta
chain C region

Background: Surface IgD is an important B cell differentiation
marker.

Form: Liquid

Isotype: Rat IgG2a, κ

Size:

50Tests/100Tests/100Tests \times 2

Host: Rat

Reactivity: Mouse

Application: FCM

Concentration: 5 μ L

Conjugation: PE

SwissProt: P01881

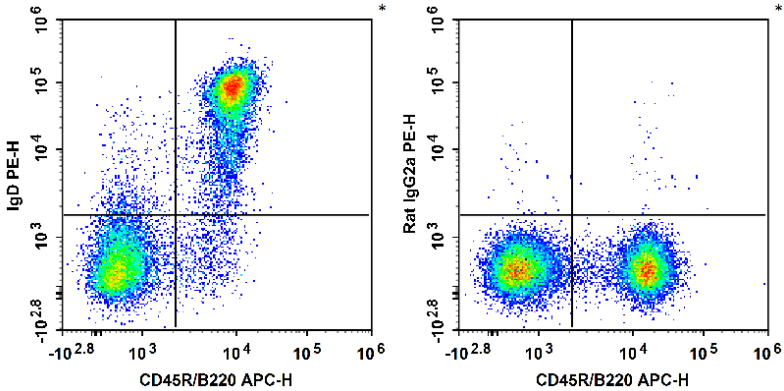
Buffer: Phosphate buffered solution, pH 7.2, containing 0.09% stabilizer and 1% protein protectant.

Recommended Use:

Each lot of this antibody is quality control tested by flow cytometric analysis. The amount of the reagent is suggested to be used 5 μ L of antibody per test (million cells in 100 μ L staining volume or per 100 μ L of whole blood). Please check your vial before the experiment. Since applications vary, the appropriate dilutions must be determined for individual use.

Data:

C57BL/6 murine splenocytes are stained with Anti-Mouse IgD Monoclonal Antibody(PE Conjugated)(filled gray histogram). Unstained splenocytes (empty black histogram) are used as control.



Storage:

Keep as concentrated solution.

Store at 2~8°C and protected from prolonged exposure to light. Do not freeze.

This product is guaranteed up to one year from purchase.