

Manufacturer/Supplier:

WUXI DONGLIN SCI&TECH DEVELOPMENT CO., LTD

Address: A1-203 Mingpin CityII, No.8 Xihudong Road, Liangxi District
Wuxi Jiangsu Province, China

TELE: 86-510-82732223

FAX: 86-510-82720101-8014

Web : www.dldevelop.com

Email: info@dldevelop.com.cn service@dldevelop.com.cn

Product name: Anti-Mouse CD14 Monoclonal
Antibody(PE/Cyanine7 Conjugated)

Catalog: DL21943F

Synonyms: CD 14, Myeloid cell-specific leucine-rich
glycoprotein, Monocyte differentiation antigen CD14

Background: CD14 is a 53-55 kD glycosylphosphatidylinositol (GPI)-linked membrane glycoprotein also known as LPS receptor. CD14 is expressed on macrophages, dendritic cells, Kupffer cells, hepatocytes, and granulocytes. As a high-affinity receptor for LPS-LBP (LPS-binding protein) complex, CD14, in association with Toll-like Receptor 4 (TLR4) or 2 (TLR2), is involved in the clearance of gram-negative pathogens.

Form: Liquid

Isotype: Rat IgG2a, κ

Size: 25 μ g/100 μ g

Host: Rat

Reactivity: Mouse

Application: FCM

Concentration: 0.2 mg/mL

Conjugation: PE/Cyanine7

SwissProt: P10810

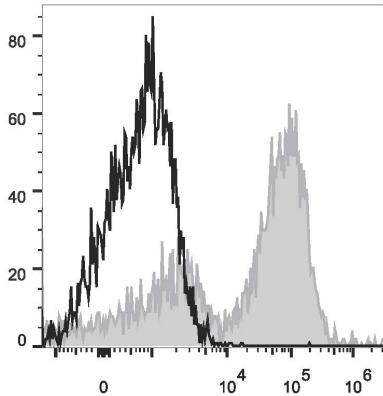
Buffer: Phosphate buffered solution, pH 7.2, containing 0.09% stabilizer and 1% protein protectant.

Recommended Use:

Each lot of this antibody is quality control tested by flow cytometric analysis. Please check your vial before the experiment. Since applications vary, the appropriate dilutions must be determined for individual use. We suggest each investigator should titrate the reagent to obtain optimal results [The recommended concentration is 0.1-1 μ g/10⁶cells in 100 μ L volume].

Data:

Mouse abdominal macrophages elicited by starch broth are stained with Anti-Mouse CD14 Monoclonal Antibody(PE/Cyanine7 Conjugated)[Used at 0.2 μ g/10⁶ cells dilution](filled gray histogram). Unstained macrophages (blank black histogram) are used as control.



Storage:

Keep as concentrated solution.

Store at 2~8°C and protected from prolonged exposure to light. Do not freeze.

This product is guaranteed up to one year from purchase.