

Manufacturer/Supplier:

WUXI DONGLIN SCI&TECH DEVELOPMENT CO., LTD

Address: A1-203 Mingpin CityII, No.8 Xihudong Road. Liangxi District
Wuxi Jiangsu Province, China

TELE: 86-510-82732223

FAX: 86-510-82720101-8014

Web : www.dldevelop.com

Email: info@dldevelop.com.cn service@dldevelop.com.cn

Product name: Anti-Human IgM Monoclonal
Antibody(PE/Cyanine7 Conjugated)

Catalog: DL21918F

Synonyms: Immunoglobulin heavy constant
mu,IGHM,Immunoglobulin M

Background: IgM is the first immunoglobulin made by B cells in the immune response. Surface IgM is expressed on immature and mature B cells, while IgM heavy (μ) chain is expressed intracellularly in pre-B cells.

Form: Liquid

Isotype: Mouse IgG1, κ

Size:

20Tests/100Tests/100Tests \times 2

Host: Mouse

Reactivity: Human

Application: FCM

Concentration: 5 μ L

Conjugation: PE/Cyanine7

SwissProt: P01871

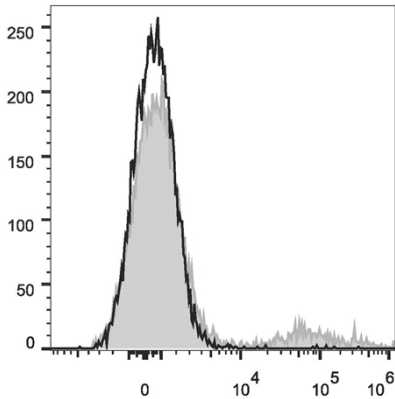
Buffer: Phosphate buffered solution, pH 7.2, containing 0.09% stabilizer and 1% protein protectant.

Recommended Use:

Each lot of this antibody is quality control tested by flow cytometric analysis. The amount of the reagent is suggested to be used 5 μ L of antibody per test (million cells in 100 μ L staining volume or per 100 μ L of whole blood). Please check your vial before the experiment. Since applications vary, the appropriate dilutions must be determined for individual use.

Data:

Human peripheral blood lymphocytes are stained with Anti-Human IgM Monoclonal Antibody(PE/Cyanine7 Conjugated)(filled gray histogram) or Mouse IgG1 Isotype Control PE/Cy7 (empty black histogram).



Storage:

Keep as concentrated solution.

Store at 2~8°C and protected from prolonged exposure to light. Do not freeze.

This product is guaranteed up to one year from purchase.