

**Manufacturer/Supplier:**

WUXI DONGLIN SCI&TECH DEVELOPMENT CO., LTD

**Address:** A1-203 Mingpin CityII, No.8 Xihudong Road, Liangxi District  
Wuxi Jiangsu Province, China

TELE: 86-510-82732223

FAX: 86-510-82720101-8014

**Web :** [www.dldevelop.com](http://www.dldevelop.com)

Email: [info@dldevelop.com.cn](mailto:info@dldevelop.com.cn)    [service@dldevelop.com.cn](mailto:service@dldevelop.com.cn)

**Product name:** Anti-Human IgM Monoclonal  
Antibody(PE/Cyanine5 Conjugated)

**Catalog:** DL21917F

**Synonyms:** Immunoglobulin heavy constant  
mu,IGHM,Immunoglobulin M

**Background:** IgM is the first immunoglobulin made by B cells in the immune response. Surface IgM is expressed on immature and mature B cells, while IgM heavy ( $\mu$ ) chain is expressed intracellularly in pre-B cells.

**Form:** Liquid

**Isotype:** Mouse IgG1,  $\kappa$

**Size:**

20Tests/100Tests/100Tests $\times$ 2

**Host:** Mouse

**Reactivity:** Human

**Application:** FCM

**Concentration:** 5  $\mu$ L

**Conjugation:** PE/Cyanine5

**SwissProt:** P01871

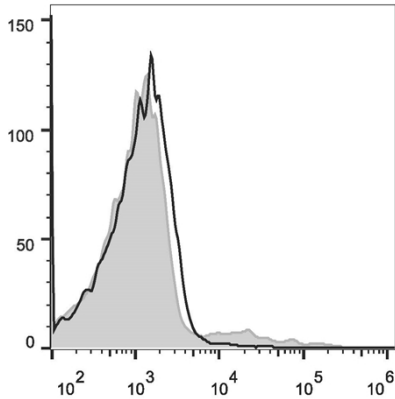
**Buffer:** Phosphate buffered solution, pH 7.2, containing 0.09% stabilizer and 1% protein protectant.

**Recommended Use:**

Each lot of this antibody is quality control tested by flow cytometric analysis. The amount of the reagent is suggested to be used 5  $\mu$ L of antibody per test (million cells in 100  $\mu$ L staining volume or per 100  $\mu$ L of whole blood). Please check your vial before the experiment. Since applications vary, the appropriate dilutions must be determined for individual use.

**Data:**

Human peripheral blood lymphocytes are stained with Anti-Human IgM Monoclonal Antibody(PE/Cyanine5 Conjugated)(filled gray histogram) or Mouse IgG1 Isotype Control PE/Cy5 (empty black histogram).



### Storage:

Keep as concentrated solution.

Store at 2~8°C and protected from prolonged exposure to light. Do not freeze.

This product is guaranteed up to one year from purchase.