

Manufacturer/Supplier:

WUXI DONGLIN SCI&TECH DEVELOPMENT CO., LTD

Address: A1-203 Mingpin CityII, No.8 Xihudong Road, Liangxi District
Wuxi Jiangsu Province, China

TELE: 86-510-82732223

FAX: 86-510-82720101-8014

Web : www.dldevelop.com

Email: info@dldevelop.com.cn service@dldevelop.com.cn

Product name: Anti-Human CD2 Monoclonal
Antibody(PerCP/Cyanine5.5 Conjugated)

Catalog: DL21803F

Synonyms: T-cell surface antigen CD2, Erythrocyte
receptor, LFA-2, LFA-3R, T11/Leu-5

Background: CD2 is a 50 kD type I transmembrane glycoprotein also known as LFA-2, T11, and sheep red blood cell receptor (SRBC-R). This immunoglobulin superfamily member is expressed on thymocytes, T lymphocytes, NK cells, and thymic B cell subsets. The major ligand for CD2 is CD58 (also known as LFA-3). CD2 has also been reported to bind CD48, CD59, and CD15. CD2 plays a critical role in alternative T cell activation, T cell signaling, and cell-cell adhesion.

Form: Liquid

Isotype: Mouse IgG1, κ

Size:

20Tests/100Tests/100Tests \times 2

Host: Mouse

Reactivity: Human

Application: FCM

Concentration: 5 μ L

Conjugation: PerCP/Cyanine5.5

SwissProt: P06729

Buffer: Phosphate buffered solution, pH 7.2, containing 0.09% stabilizer and 1% protein protectant.

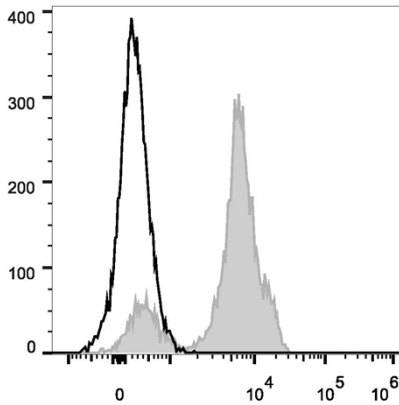
Recommended Use:

Each lot of this antibody is quality control tested by flow cytometric analysis. The amount of the reagent is suggested to be used 5 μ L of antibody per test (million cells in 100 μ L staining volume or per 100 μ L of whole blood). Please check your vial before the experiment. Since applications vary, the appropriate dilutions must be determined for individual use.

Data:

Human peripheral blood lymphocytes are stained with Anti-Human CD2 Monoclonal Antibody(PerCP/Cyanine5.5 Conjugated)(filled gray histogram). Unstained lymphocytes (empty black histogram) are used as

control.



Storage:

Keep as concentrated solution.

Store at 2~8°C and protected from prolonged exposure to light. Do not freeze.

This product is guaranteed up to one year from purchase.