

**Manufacturer/Supplier:**

WUXI DONGLIN SCI&TECH DEVELOPMENT CO., LTD

**Address:** A1-203 Mingpin CityII, No.8 Xihudong Road, Liangxi District  
Wuxi Jiangsu Province, China

TELE: 86-510-82732223

FAX: 86-510-82720101-8014

**Web :** [www.dldevelop.com](http://www.dldevelop.com)

Email: [info@dldevelop.com.cn](mailto:info@dldevelop.com.cn)    [service@dldevelop.com.cn](mailto:service@dldevelop.com.cn)

**Product name:** Anti-Human CD11b Monoclonal Antibody(AF647  
Conjugated)

**Catalog:** DL21786F

**Synonyms:** Integrin alpha-M, Itgam, CD11 antigen-like family  
member B, CR-3 alpha chain, Leukocyte adhesion  
receptor MO1, CD11b

**Background:** CD11b is a 165-170 kD type I transmembrane glycoprotein also known as  $\alpha$ Mintegrin, Mac-1, CR3, and C3biR. CD11b non-covalently associates with integrin  $\beta$ 2(CD18) and is expressed on granulocytes, monocytes/macrophages, dendritic cells, NK cells, and subsets of T and B cells. CD11b/CD18 is critical for the transendothelial migration of monocytes and neutrophils. It is also involved in granulocyte adhesion, phagocytosis, and neutrophil activation.

CD11b/CD18 interacts with ICAM-1 (CD54), ICAM-2 (CD102), ICAM-4, CD14, CD23, heparin, iC3b, fibrinogen, and factor X.

**Form:** Liquid

**Isotype:** Mouse IgG1,  $\kappa$

**Size:**

**Host:** Mouse

20Tests/100Tests/100Tests $\times$ 2

**Reactivity:** Human

**Application:** FCM

**Concentration:** 5  $\mu$ L

**Conjugation:** AF647

**SwissProt:** P11215

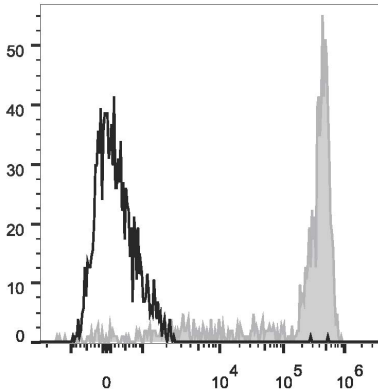
**Buffer:** Phosphate buffered solution, pH 7.2, containing 0.09% stabilizer and 1% protein protectant.

### **Recommended Use:**

Each lot of this antibody is quality control tested by flow cytometric analysis. The amount of the reagent is suggested to be used 5  $\mu$ L of antibody per test (million cells in 100  $\mu$ L staining volume or per 100  $\mu$ L of whole blood). Please check your vial before the experiment. Since applications vary, the appropriate dilutions must be determined for individual use.

**Data:**

Human peripheral blood monocytes are stained with Anti-Human CD11b Monoclonal Antibody(AF647 Conjugated)(filled gray histogram). Unstained monocytes (empty black histogram) are used as control.



### Storage:

Keep as concentrated solution.

Store at 2~8°C and protected from prolonged exposure to light. Do not freeze.

This product is guaranteed up to one year from purchase.