

Manufacturer/Supplier:

WUXI DONGLIN SCI&TECH DEVELOPMENT CO., LTD

Address: A1-203 Mingpin CityII, No.8 Xihudong Road, Liangxi District
Wuxi Jiangsu Province, China

TELE: 86-510-82732223

FAX: 86-510-82720101-8014

Web : www.dldevelop.com

Email: info@dldevelop.com.cn service@dldevelop.com.cn

Product name: Anti-Human CD10 Monoclonal Antibody(AF488
Conjugated)

Catalog: DL21743F

Synonyms: Neprilysin, Atriopeptidase, CALLA, Enkephalinase, N
EP, Neutral endopeptidase, Skin fibroblast
elastase, SFE, CD10

Background: CD10 is a 100 kD neutral endopeptidase and a member of the metalloprotease family. It is a type II transmembrane protein also known as common acute lymphoblastic leukemia antigen (CALLA), enkephalinase, and neprilysin. CD10 is expressed on B cell precursors, T cell precursors, and neutrophils. CD10 is involved in B cell development and has been shown to bind opioid enkephalins, bradykinin, angiotensins I and II, and other biologically active

peptides.

Form: Liquid

Isotype: Mouse IgG1, κ

Size:

Host: Mouse

20Tests/100Tests/100Tests \times 2

Reactivity: Human

Application: FCM

Concentration: 5 μ L

Conjugation: AF488

SwissProt: P08473

Buffer: Phosphate buffered solution, pH 7.2, containing 0.09% stabilizer and 1% protein protectant.

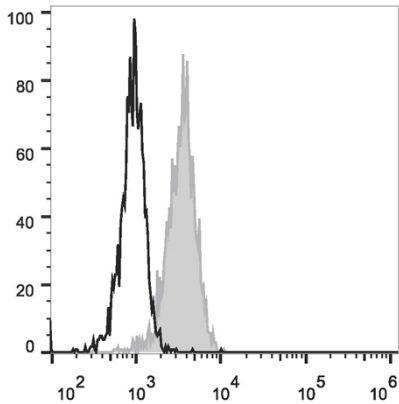
Recommended Use:

Each lot of this antibody is quality control tested by flow cytometric analysis. The amount of the reagent is suggested to be used 5 μ L of antibody per test (million cells in 100 μ L staining volume or per 100 μ L of whole blood). Please check your vial before the experiment. Since applications vary, the appropriate dilutions must be determined for individual use.

Data:

Human peripheral blood granulocytes are stained with Anti-Human CD10 Monoclonal Antibody(AF488 Conjugated)(filled gray histogram).

Unstained granulocytes (empty black histogram) are used as control.



Storage:

Keep as concentrated solution.

Store at 2~8°C and protected from prolonged exposure to light. Do not freeze.

This product is guaranteed up to one year from purchase.