

**Manufacturer/Supplier:**

WUXI DONGLIN SCI&TECH DEVELOPMENT CO., LTD

**Address:** A1-203 Mingpin CityII, No.8 Xihudong Road, Liangxi District  
Wuxi Jiangsu Province, China

TELE: 86-510-82732223

FAX: 86-510-82720101-8014

**Web :** [www.dldevelop.com](http://www.dldevelop.com)

Email: [info@dldevelop.com.cn](mailto:info@dldevelop.com.cn)    [service@dldevelop.com.cn](mailto:service@dldevelop.com.cn)

**Product name:** Anti-Mouse CD279/PD-1 Monoclonal  
Antibody(AF647 Conjugated)

**Catalog:** DL21653F

**Synonyms:** PD-1, Programmed Death-1

**Background:** CD279, also known as programmed death-1 (PD-1), is a 50-55 kD glycoprotein belonging to the CD28 family of the Ig superfamily. PD-1 is expressed on activated splenic T and B cells and thymocytes. It is induced on activated myeloid cells as well. PD-1 is involved in lymphocyte clonal selection and peripheral tolerance through binding its ligands, B7-H1 (PD-L1) and B7-DC (PD-L2). It has been reported that PD-1 and PD-L1 interactions are critical to positive selection and play a role in shaping the T cell repertoire. PD-L1 negative

costimulation is essential for prolonged survival of intratesticular islet allografts.

**Form:** Liquid

**Isotype:** Rat IgG2a,  $\kappa$

**Size:** 25 $\mu$ g/100 $\mu$ g

**Host:** Rat

**Reactivity:** Mouse

**Application:** FCM

**Concentration:** 0.5 mg/mL

**Conjugation:** AF647

**SwissProt:** Q02242

**Buffer:** Phosphate buffered solution, pH 7.2, containing 0.09% stabilizer and 1% protein protectant.

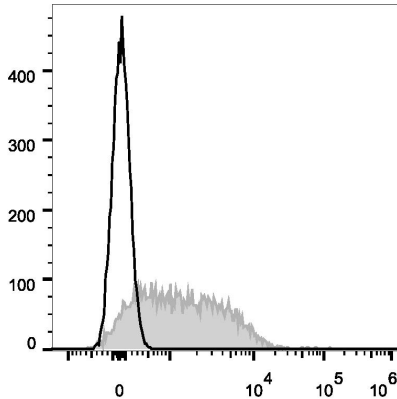
### Recommended Use:

Each lot of this antibody is quality control tested by flow cytometric analysis. Please check your vial before the experiment. Since applications vary, the appropriate dilutions must be determined for individual use. We suggest each investigator should titrate the reagent to obtain optimal results [The recommended concentration is 0.1-1  $\mu$ g/10<sup>6</sup>cells in 100  $\mu$ L volume].

### Data:

Con-A stimulated C57BL/6 splenocytes (3 days) are stained with

Anti-Mouse CD279/PD-1 Monoclonal Antibody(AF647 Conjugated)[Used at  $0.2 \mu\text{g}/10^6$  cells dilution](filled gray histogram).  
Unstained splenocytes (empty black histogram) are used as control.



### Storage:

Keep as concentrated solution.

Store at  $2\sim 8^{\circ}\text{C}$  and protected from prolonged exposure to light. Do not freeze.

This product is guaranteed up to one year from purchase.