

Manufacturer/Supplier:

WUXI DONGLIN SCI&TECH DEVELOPMENT CO., LTD

Address: A1-203 Mingpin CityII, No.8 Xihudong Road. Liangxi District
Wuxi Jiangsu Province, China

TELE: 86-510-82732223

FAX: 86-510-82720101-8014

Web : www.dldevelop.com

Email: info@dldevelop.com.cn service@dldevelop.com.cn

Product name: Anti-Human CD1a Monoclonal Antibody(FITC
Conjugated)

Catalog: DL21596F

Synonyms: T6, R4, CD 1a, CD1A, T-cell surface glycoprotein
CD1a

Background: CD1a is a 49 kD member of the immunoglobulin superfamily also known as T6 and R4. It is a type I membrane glycoprotein with structural similarities to MHC class I and is non-covalently associated with β 2-microglobulin. CD1a plays a role in non-peptide glycolipid antigen presentation to CD1-restricted T cells. It is expressed on cortical double positive and single positive thymocytes, Langerhans cells, and dendritic cells. In addition to antigen presentation, CD1a has been implicated in thymic T cell

development.

Form: Liquid

Isotype: Mouse IgG1, κ

Size:

Host: Mouse

20Tests/100Tests/100Tests \times 2

Reactivity: Human

Application: FCM

Concentration: 5 μ L

Conjugation: FITC

SwissProt: P06126

Buffer: Phosphate buffered solution, pH 7.2, containing 0.09% stabilizer and 1% protein protectant.

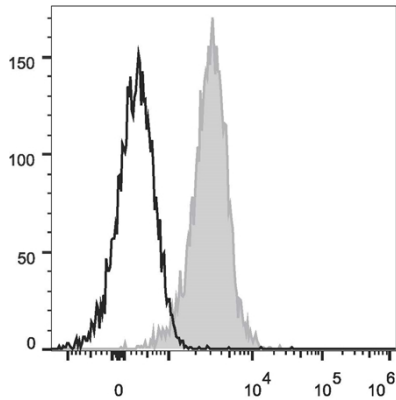
Recommended Use:

Each lot of this antibody is quality control tested by flow cytometric analysis. The amount of the reagent is suggested to be used 5 μ L of antibody per test (million cells in 100 μ L staining volume or per 100 μ L of whole blood). Please check your vial before the experiment. Since applications vary, the appropriate dilutions must be determined for individual use.

Data:

Human T lymphoblastic leukemia cell line Molt-4 are stained with Anti-Human CD1a Monoclonal Antibody(FITC Conjugated)(filled

gray histogram) or Mouse IgG1 Isotype Control FITC(empty black histogram).



Storage:

Keep as concentrated solution.

Store at 2~8°C and protected from prolonged exposure to light. Do not freeze.

This product is guaranteed up to one year from purchase.