

**Manufacturer/Supplier:**

WUXI DONGLIN SCI&TECH DEVELOPMENT CO., LTD

**Address:** A1-203 Mingpin CityII, No.8 Xihudong Road, Liangxi District  
Wuxi Jiangsu Province, China

TELE: 86-510-82732223

FAX: 86-510-82720101-8014

**Web :** [www.dldevelop.com](http://www.dldevelop.com)

Email: [info@dldevelop.com.cn](mailto:info@dldevelop.com.cn)    [service@dldevelop.com.cn](mailto:service@dldevelop.com.cn)

**Product name:** Anti-Mouse TCR $\beta$  Monoclonal Antibody(PE  
Conjugated)

**Catalog:** DL21546F

**Synonyms:** TCR- $\beta$  chain, TCR- $\beta$ ,  $\beta$ -TCR

**Background:** T cell receptor (TCR) is a heterodimer consisting of an  $\alpha$  and a  $\beta$  chain (TCR  $\alpha/\beta$ ) or a  $\gamma$  and a  $\delta$  chain (TCR  $\gamma/\delta$ ). TCR- $\beta$  is a member of the immunoglobulin superfamily and a component of the CD3/TCR complex (along with TCR- $\alpha$ ). It is expressed on  $\alpha/\beta$  TCR-bearing T cells and thymocytes. The CD3/TCR complex plays a key role in antigen recognition, signal transduction, and T cell activation.

**Form:** Liquid

**Isotype:** Armenian Hamster IgG

**Size:**

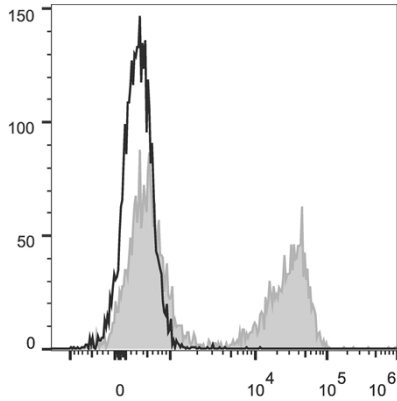
50Tests/100Tests/100Tests×2

**Host:** Armenian Hamster**Reactivity:** Mouse**Application:** FCM**Concentration:** 5  $\mu$ L**Conjugation:** PE**SwissProt:****Buffer:** Phosphate buffered solution, pH 7.2, containing 0.09% stabilizer and 1% protein protectant.**Recommended Use:**

Each lot of this antibody is quality control tested by flow cytometric analysis. The amount of the reagent is suggested to be used 5  $\mu$ L of antibody per test (million cells in 100  $\mu$ L staining volume or per 100  $\mu$ L of whole blood). Please check your vial before the experiment. Since applications vary, the appropriate dilutions must be determined for individual use.

**Data:**

C57BL/6 murine splenocytes are stained with Anti-Mouse TCR $\beta$  Monoclonal Antibody(PE Conjugated)(filled gray histogram). Unstained splenocytes (empty black histogram) are used as control.



### Storage:

Keep as concentrated solution.

Store at 2~8°C and protected from prolonged exposure to light. Do not freeze.

This product is guaranteed up to one year from purchase.