

Manufacturer/Supplier:

WUXI DONGLIN SCI&TECH DEVELOPMENT CO., LTD

Address: A1-203 Mingpin CityII, No.8 Xihudong Road. Liangxi District
Wuxi Jiangsu Province, China

TELE: 86-510-82732223

FAX: 86-510-82720101-8014

Web : www.dldevelop.com

Email: info@dldevelop.com.cn service@dldevelop.com.cn

Product name: Anti-Mouse Ly6C Monoclonal
Antibody(PerCP/Cyanine5.5 Conjugated)

Catalog: DL21516F

Synonyms: Lymphocyte antigen 6 complex, locus C, Ly
6C, Ly6c1, Ly6c2

Background: Most hematopoietic cells express one or more members of Ly-6 family. The expression of Ly-6 varies with development stage and activation. Ly-6C is a 14-17 kD GPI-linked surface protein expressed on mouse monocyte/macrophage cells, endothelial cells, neutrophils, and some T cell subsets. Ly-6C is reported to be an indicator of memory CD8⁺ T cells.

Form: Liquid

Isotype: Rat IgG2a, κ

Size: 25µg/100µg

Host: Rat

Reactivity: Mouse

Application: FCM

Concentration: 0.2 mg/mL

Conjugation: PerCP/Cyanine5.5

SwissProt: P0CW02,P0CW03

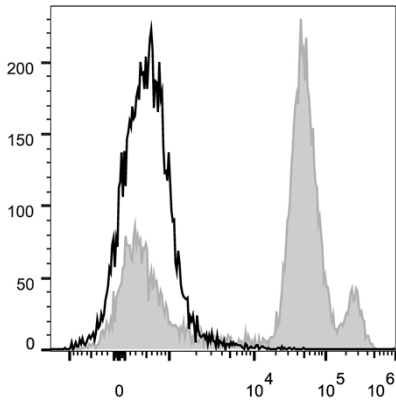
Buffer: Phosphate buffered solution, pH 7.2, containing 0.09% stabilizer and 1% protein protectant.

Recommended Use:

Each lot of this antibody is quality control tested by flow cytometric analysis. Please check your vial before the experiment. Since applications vary, the appropriate dilutions must be determined for individual use. We suggest each investigator should titrate the reagent to obtain optimal results [The recommended concentration is 0.1-1 µg/10⁶cells in 100 µL volume].

Data:

C57BL/6 murine bone marrow cells are stained with Anti-Mouse Ly6C Monoclonal Antibody(PerCP/Cyanine5.5 Conjugated)[Used at 0.2 µg/10⁶ cells dilution](filled gray histogram). Unstained bone marrow cells (empty black histogram) are used as control.



Storage:

Keep as concentrated solution.

Store at 2~8°C and protected from prolonged exposure to light. Do not freeze.

This product is guaranteed up to one year from purchase.