

Manufacturer/Supplier:

WUXI DONGLIN SCI&TECH DEVELOPMENT CO., LTD

Address: A1-203 Mingpin CityII, No.8 Xihudong Road, Liangxi District
Wuxi Jiangsu Province, China

TELE: 86-510-82732223

FAX: 86-510-82720101-8014

Web : www.dldevelop.com

Email: info@dldevelop.com.cn service@dldevelop.com.cn

Product name: Anti-Mouse Ly-6G/Ly-6C (Gr-1) Monoclonal
Antibody(AF488 Conjugated)

Catalog: DL21494F

Synonyms: Gr-1, Gr1, Ly-6G/Ly-6C, Ly6G/Ly6C

Background: Gr-1 is a 21-25 kD protein also known as Ly-6G/Ly-6C. This myeloid differentiation antigen is a glycosylphosphatidylinositol (GPI)-linked protein expressed on granulocytes and macrophages. In bone marrow, the expression levels of Gr-1 directly correlate with granulocyte differentiation and maturation; Gr-1 is also transiently expressed on bone marrow cells in the monocyte lineage. Immature Myeloid Gr-1+ cells play a role in the development of antitumor immunity.

Form: Liquid

Isotype: Rat IgG2b, κ

Size: 25 μ g/100 μ g

Host: Rat

Reactivity: Mouse

Application: FCM

Concentration: 0.5 mg/mL

Conjugation: AF488

SwissProt: P35461,P0CW02,P0CW03

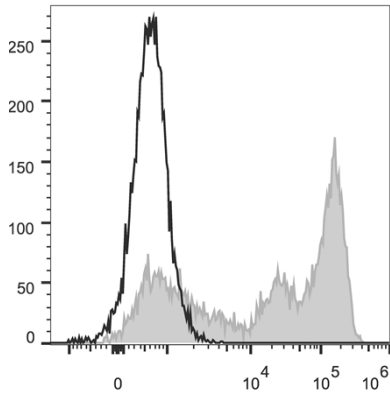
Buffer: Phosphate buffered solution, pH 7.2, containing 0.09% stabilizer and 1% protein protectant.

Recommended Use:

Each lot of this antibody is quality control tested by flow cytometric analysis. Please check your vial before the experiment. Since applications vary, the appropriate dilutions must be determined for individual use. We suggest each investigator should titrate the reagent to obtain optimal results [The recommended concentration is 0.1-1 μ g/10⁶ cells in 100 μ L volume].

Data:

C57BL/6 murine bone marrow cells are stained with Anti-Mouse Gr-1 Monoclonal Antibody(AF488 Conjugated)[Used at 0.02 μ g/10⁶ cells dilution](filled gray histogram). Unstained bone marrow cells (empty black histogram) are used as control.



Storage:

Keep as concentrated solution.

Store at 2~8°C and protected from prolonged exposure to light. Do not freeze.

This product is guaranteed up to one year from purchase.