

**Manufacturer/Supplier:**

WUXI DONGLIN SCI&TECH DEVELOPMENT CO., LTD

**Address:** A1-203 Mingpin CityII, No.8 Xihudong Road. Liangxi District  
Wuxi Jiangsu Province, China

TELE: 86-510-82732223

FAX: 86-510-82720101-8014

**Web :** [www.dldevelop.com](http://www.dldevelop.com)

Email: [info@dldevelop.com.cn](mailto:info@dldevelop.com.cn)    [service@dldevelop.com.cn](mailto:service@dldevelop.com.cn)

**Product name:** Anti-Human CD8a Monoclonal  
Antibody(PE/Cyanine5 Conjugated)

**Catalog:** DL21341F

**Synonyms:** T-cell surface glycoprotein CD8 alpha  
chain, CD8A, T-lymphocyte differentiation antigen  
T8/Leu-2, MAL

**Background:** CD8a is a 32-34 kD type I glycoprotein. It forms a homodimer (CD8a/a) or heterodimer (CD8a/b) with CD8b. CD8, also known as T8 and Leu2, is a member of the immunoglobulin superfamily found on the majority of thymocytes, a subset of peripheral blood T cells, and NK cells (which express almost exclusively CD8a homodimers). CD8 acts as a co-receptor with MHC class I-restricted T cell receptors in antigen recognition and T cell activation

and has been shown to play a role in thymic differentiation. Two domains in CD8a are important for function: the extracellular IgSF domain binds the  $\alpha 3$  domain of MHC class I and the cytoplasmic CXCP motif binds the tyrosine kinase p56 Lck.

**Form:** Liquid

**Isotype:** Mouse IgG2a,  $\kappa$

**Size:**

20Tests/100Tests/100Tests $\times$ 2

**Host:** Mouse

**Reactivity:** Human

**Application:** FCM

**Concentration:** 5  $\mu$ L

**Conjugation:** PE/Cyanine5

**SwissProt:** P01732

**Buffer:** Phosphate buffered solution, pH 7.2, containing 0.09% stabilizer and 1% protein protectant.

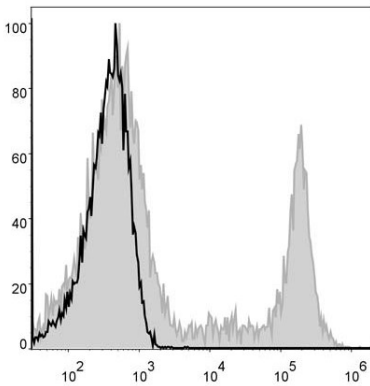
### **Recommended Use:**

Each lot of this antibody is quality control tested by flow cytometric analysis. The amount of the reagent is suggested to be used 5  $\mu$ L of antibody per test (million cells in 100  $\mu$ L staining volume or per 100  $\mu$ L of whole blood). Please check your vial before the experiment. Since applications vary, the appropriate dilutions must be determined

for individual use.

**Data:**

Human peripheral blood cells are stained with Anti-Human CD8 Monoclonal Antibody(PE/Cyanine5 Conjugated)(filled gray histogram). Unstained peripheral blood cells (blank black histogram) are used as control.



**Storage:**

Keep as concentrated solution.

Store at 2~8°C and protected from prolonged exposure to light. Do not freeze.

This product is guaranteed up to one year from purchase.