

**Manufacturer/Supplier:**

WUXI DONGLIN SCI&TECH DEVELOPMENT CO., LTD

**Address:** A1-203 Mingpin CityII, No.8 Xihudong Road, Liangxi District  
Wuxi Jiangsu Province, China

**TELE:** 86-510-82732223

**FAX:** 86-510-82720101-8014

**Web :** [www.dldevelop.com](http://www.dldevelop.com)

**Email:** [info@dldevelop.com.cn](mailto:info@dldevelop.com.cn)    [service@dldevelop.com.cn](mailto:service@dldevelop.com.cn)

**Product name:** Anti-Mouse Ly6G Monoclonal  
Antibody(PE/Cyanine5 Conjugated)

**Catalog:** DL21315F

**Synonyms:** Lymphocyte antigen 6G, Ly-6G, Ly-6G.1, Ly6g

**Background:** Lymphocyte antigen 6 complex, locus G (Ly-6G), a 21-25 kD GPI-anchored protein, is expressed on the majority of myeloid cells in bone marrow and peripheral granulocytes.

**Form:** Liquid

**Isotype:** Rat IgG2a,  $\kappa$

**Size:** 25 $\mu$ g/100 $\mu$ g

**Host:** Rat

**Reactivity:** Mouse

**Application:** FCM

**Concentration:** 0.2 mg/mL

**Conjugation:** PE/Cyanine5

**SwissProt:** P35461

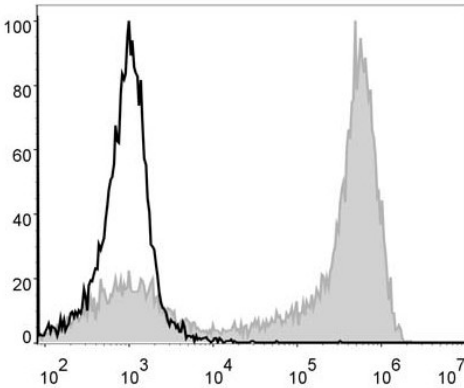
**Buffer:** Phosphate buffered solution, pH 7.2, containing 0.09% stabilizer and 1% protein protectant.

**Recommended Use:**

Each lot of this antibody is quality control tested by flow cytometric analysis. Please check your vial before the experiment. Since applications vary, the appropriate dilutions must be determined for individual use. We suggest each investigator should titrate the reagent to obtain optimal results [The recommended concentration is 0.1-1  $\mu\text{g}/10^6$  cells in 100  $\mu\text{L}$  volume].

**Data:**

Mouse bone marrow cells are stained with Anti-Mouse Ly6G Monoclonal Antibody(PE/Cyanine5 Conjugated)[Used at 0.2  $\mu\text{g}/10^6$  cells dilution](filled gray histogram). Unstained bone marrow cells (blank black histogram) are used as control.



### Storage:

Keep as concentrated solution.

Store at 2~8°C and protected from prolonged exposure to light. Do not freeze.

This product is guaranteed up to one year from purchase.