

**Manufacturer/Supplier:**

WUXI DONGLIN SCI&TECH DEVELOPMENT CO., LTD

**Address:** A1-203 Mingpin CityII, No.8 Xihudong Road, Liangxi District  
Wuxi Jiangsu Province, China

TELE: 86-510-82732223

FAX: 86-510-82720101-8014

**Web :** [www.dldevelop.com](http://www.dldevelop.com)

Email: [info@dldevelop.com.cn](mailto:info@dldevelop.com.cn)    [service@dldevelop.com.cn](mailto:service@dldevelop.com.cn)

**Product name:** Anti-Mouse Ly6G Monoclonal  
Antibody(PE/Cyanine5 Conjugated)

**Catalog:** DL21305F

**Synonyms:** Lymphocyte antigen 6G, Ly-6G, Ly-6G.1, Ly6g

**Background:** Lymphocyte antigen 6 complex, locus G (Ly-6G), a 21-25 kD GPI-anchored protein, is expressed on the majority of myeloid cells in bone marrow and peripheral granulocytes.

**Form:** Liquid

**Isotype:** Rat IgG2a,  $\kappa$

**Size:**

50Tests/100Tests/100Tests $\times$ 2

**Host:** Rat

**Reactivity:** Mouse

**Application:** FCM

**Concentration:** 5  $\mu$ L

**Conjugation:** PE/Cyanine5

**SwissProt:** P35461

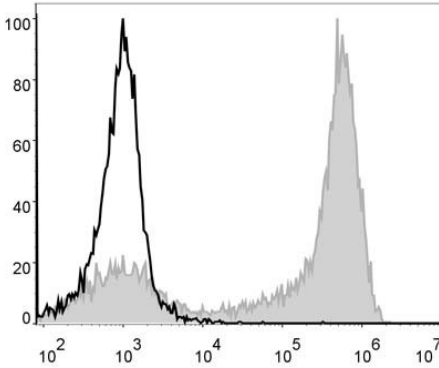
**Buffer:** Phosphate buffered solution, pH 7.2, containing 0.09% stabilizer and 1% protein protectant.

### **Recommended Use:**

Each lot of this antibody is quality control tested by flow cytometric analysis. The amount of the reagent is suggested to be used 5  $\mu$ L of antibody per test (million cells in 100  $\mu$ L staining volume or per 100  $\mu$ L of whole blood). Please check your vial before the experiment. Since applications vary, the appropriate dilutions must be determined for individual use.

### **Data:**

Mouse bone marrow cells are stained with Anti-Mouse Ly6G Monoclonal Antibody(PE/Cyanine5 Conjugated)(filled gray histogram). Unstained bone marrow cells (blank black histogram) are used as control.



### Storage:

Keep as concentrated solution.

Store at 2~8°C and protected from prolonged exposure to light. Do not freeze.

This product is guaranteed up to one year from purchase.