

**Manufacturer/Supplier:**

WUXI DONGLIN SCI&TECH DEVELOPMENT CO., LTD

**Address:** A1-203 Mingpin CityII, No.8 Xihudong Road, Liangxi District  
Wuxi Jiangsu Province, China

TELE: 86-510-82732223

FAX: 86-510-82720101-8014

**Web :** [www.dldevelop.com](http://www.dldevelop.com)

Email: [info@dldevelop.com.cn](mailto:info@dldevelop.com.cn)    [service@dldevelop.com.cn](mailto:service@dldevelop.com.cn)

**Product name:** Anti-Rat CD4(domain 1) Monoclonal  
Antibody(AF488 Conjugated)

**Catalog:** DL21280F

**Synonyms:** T-cell surface glycoprotein CD4, CD4, T-cell surface  
antigen T4/Leu-3, CD4

**Background:** CD4, also known as T4, is a 55kD glycoprotein member of the immunoglobulin superfamily and is expressed on majority of thymocytes, macrophages, and a peripheral T cell subset (T helper cells). CD4 is a T cell co-receptor that interacts with the MHC class II molecule and is involved in T cell activation.

**Form:** Liquid

**Isotype:** Mouse IgG2a,  $\kappa$

**Size:**

**Host:** Mouse

50Tests/100Tests/100Tests×2

**Reactivity:** Rat

**Application:** FCM

**Concentration:** 5 µL

**Conjugation:** AF488

**SwissProt:** P05540

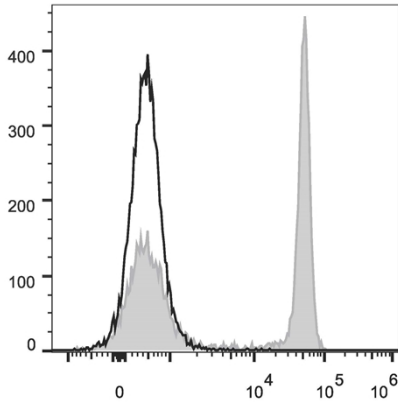
**Buffer:** Phosphate buffered solution, pH 7.2, containing 0.09% stabilizer and 1% protein protectant.

### **Recommended Use:**

Each lot of this antibody is quality control tested by flow cytometric analysis. The amount of the reagent is suggested to be used 5 µL of antibody per test (million cells in 100 µL staining volume or per 100 µL of whole blood). Please check your vial before the experiment. Since applications vary, the appropriate dilutions must be determined for individual use.

### **Data:**

Rat splenocytes are stained with Anti-Rat CD4(domain 1) Monoclonal Antibody(AF488 Conjugated)(filled gray histogram). Unstained splenocytes (empty black histogram) are used as control.



### Storage:

Keep as concentrated solution.

Store at 2~8°C and protected from prolonged exposure to light. Do not freeze.

This product is guaranteed up to one year from purchase.