

Manufacturer/Supplier:

WUXI DONGLIN SCI&TECH DEVELOPMENT CO., LTD

Address: A1-203 Mingpin CityII, No.8 Xihudong Road, Liangxi District
Wuxi Jiangsu Province, China

TELE: 86-510-82732223

FAX: 86-510-82720101-8014

Web : www.dldevelop.com

Email: info@dldevelop.com.cn service@dldevelop.com.cn

Product name: Anti-Mouse CD8a Monoclonal Antibody(AF647
Conjugated)

Catalog: DL21269F

Synonyms: T-cell surface glycoprotein CD8 alpha
chain, CD8A, T-lymphocyte differentiation antigen
T8/Leu-2, MAL

Background: CD8, also known as Lyt-2, Ly-2, or T8, consists of disulfide-linked α and β chains that form the α (CD8a)/ β (CD8b) heterodimer and α/α homodimer. CD8a is a 34 kD protein that belongs to the immunoglobulin family. The CD8 α/β heterodimer is expressed on the surface of most thymocytes and a subset of mature TCR α/β T cells. CD8 expression on mature T cells is non-overlapping with CD4. The CD8 α/α homodimer is expressed on a subset of γ/δ

TCR-bearing T cells, NK cells, intestinal intraepithelial lymphocytes, and lymphoid dendritic cells. CD8 is an antigen co-receptor on T cells that interacts with MHC class I on antigen-presenting cells or epithelial cells. CD8 promotes T cell activation through its association with the TCR complex and protein tyrosine kinase lck.

Form: Liquid

Isotype: Rat IgG2a, κ

Size: 25 μ g/100 μ g

Host: Rat

Reactivity: Mouse

Application: FCM

Concentration: 0.5 mg/mL

Conjugation: AF647

SwissProt: P01731

Buffer: Phosphate buffered solution, pH 7.2, containing 0.09% stabilizer and 1% protein protectant.

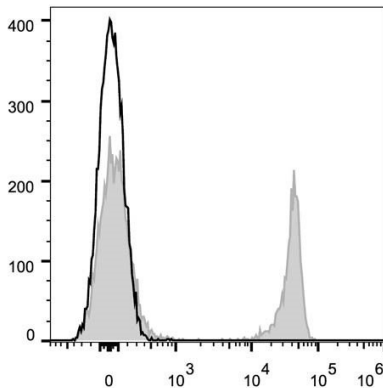
Recommended Use:

Each lot of this antibody is quality control tested by flow cytometric analysis. Please check your vial before the experiment. Since applications vary, the appropriate dilutions must be determined for

individual use. We suggest each investigator should titrate the reagent to obtain optimal results [The recommended concentration is 0.1-1 $\mu\text{g}/10^6$ cells in 100 μL volume].

Data:

C57BL/6 murine splenocytes are stained with Anti-Mouse CD8a Monoclonal Antibody(AF647 Conjugated)[Used at 0.05 $\mu\text{g}/10^6$ cells dilution](filled gray histogram). Unstained splenocytes (empty black histogram) are used as control.



Storage:

Keep as concentrated solution.

Store at 2~8°C and protected from prolonged exposure to light. Do not freeze.

This product is guaranteed up to one year from purchase.