

**Manufacturer/Supplier:**

WUXI DONGLIN SCI&TECH DEVELOPMENT CO., LTD

**Address:** A1-203 Mingpin CityII, No.8 Xihudong Road, Liangxi District  
Wuxi Jiangsu Province, China

TELE: 86-510-82732223

FAX: 86-510-82720101-8014

**Web :** [www.dldevelop.com](http://www.dldevelop.com)

Email: [info@dldevelop.com.cn](mailto:info@dldevelop.com.cn)    [service@dldevelop.com.cn](mailto:service@dldevelop.com.cn)

**Product name:** Anti-Mouse CD8a Monoclonal Antibody(AF488  
Conjugated)

**Catalog:** DL21258F

**Synonyms:** T-cell surface glycoprotein CD8 alpha  
chain, CD8A, T-lymphocyte differentiation antigen  
T8/Leu-2, MAL

**Background:** CD8, also known as Lyt-2, Ly-2, or T8, consists of disulfide-linked  $\alpha$  and  $\beta$  chains that form the  $\alpha$ (CD8a)/ $\beta$ (CD8b) heterodimer and  $\alpha/\alpha$  homodimer. CD8a is a 34 kD protein that belongs to the immunoglobulin family. The CD8  $\alpha/\beta$  heterodimer is expressed on the surface of most thymocytes and a subset of mature TCR  $\alpha/\beta$  T cells. CD8 expression on mature T cells is non-overlapping with CD4. The CD8  $\alpha/\alpha$  homodimer is expressed on a subset of  $\gamma/\delta$

TCR-bearing T cells, NK cells, intestinal intraepithelial lymphocytes, and lymphoid dendritic cells. CD8 is an antigen co-receptor on T cells that interacts with MHC class I on antigen-presenting cells or epithelial cells. CD8 promotes T cell activation through its association with the TCR complex and protein tyrosine kinase lck.

**Form:** Liquid

**Isotype:** Rat IgG2a,  $\kappa$

**Size:**

50Tests/100Tests/100Tests $\times$ 2

**Host:** Rat

**Reactivity:** Mouse

**Application:** FCM

**Concentration:** 5  $\mu$ L

**Conjugation:** AF488

**SwissProt:** P01731

**Buffer:** Phosphate buffered solution, pH 7.2, containing 0.09% stabilizer and 1% protein protectant.

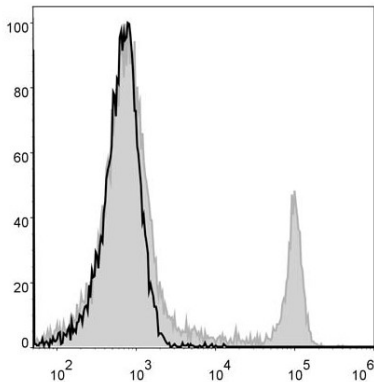
### **Recommended Use:**

Each lot of this antibody is quality control tested by flow cytometric analysis. The amount of the reagent is suggested to be used 5  $\mu$ L of antibody per test (million cells in 100  $\mu$ L staining volume or per

100  $\mu$ L of whole blood). Please check your vial before the experiment. Since applications vary, the appropriate dilutions must be determined for individual use.

**Data:**

Mouse splenocytes are stained with Anti-Mouse CD8a Monoclonal Antibody(AF488 Conjugated)(filled gray histogram). Unstained splenocytes (blank black histogram) are used as control.



**Storage:**

Keep as concentrated solution.

Store at 2~8°C and protected from prolonged exposure to light. Do not freeze.

This product is guaranteed up to one year from purchase.