

**Manufacturer/Supplier:**

WUXI DONGLIN SCI&TECH DEVELOPMENT CO., LTD

**Address:** A1-203 Mingpin CityII, No.8 Xihudong Road. Liangxi District  
Wuxi Jiangsu Province, China

TELE: 86-510-82732223

FAX: 86-510-82720101-8014

**Web :** [www.dldevelop.com](http://www.dldevelop.com)

Email: [info@dldevelop.com.cn](mailto:info@dldevelop.com.cn)    [service@dldevelop.com.cn](mailto:service@dldevelop.com.cn)

**Product name:** Anti-Mouse CD3 $\epsilon$  Monoclonal Antibody(AF488  
Conjugated)

**Catalog:** DL21245F

**Synonyms:** T-cell surface glycoprotein CD3 epsilon  
chain, CD3E, T-cell surface antigen T3/Leu-4 epsilon  
chain, CD3e, CD3E, T3E

**Background:** CD3 $\epsilon$  is a 20 kD transmembrane protein, also known as CD3 or T3. It is a member of the Ig superfamily and primarily expressed on T cells, NK-T cells, and at different levels on thymocytes during T cell differentiation. CD3 $\epsilon$  forms a TCR complex by associating with the CD3 $\delta$ ,  $\gamma$  and  $\zeta$  chains, as well as the TCR  $\alpha/\beta$  or  $\gamma/\delta$  chains. CD3 plays a critical role in TCR signal transduction, T cell activation, and antigen recognition by binding the peptide/MHC

antigen complex.

**Form:** Liquid

**Isotype:** Armenian Hamster IgG

**Size:** 25µg/100µg

**Host:** Armenian Hamster

**Reactivity:** Mouse

**Application:** FCM

**Concentration:** 0.5 mg/mL

**Conjugation:** AF488

**SwissProt:** P22646

**Buffer:** Phosphate buffered solution, pH 7.2, containing 0.09% stabilizer and 1% protein protectant.

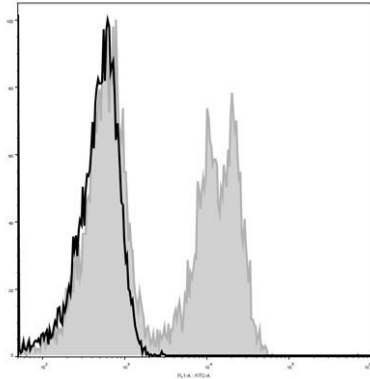
### **Recommended Use:**

Each lot of this antibody is quality control tested by flow cytometric analysis. Please check your vial before the experiment. Since applications vary, the appropriate dilutions must be determined for individual use. We suggest each investigator should titrate the reagent to obtain optimal results [The recommended concentration is 0.1-1 µg/10<sup>6</sup> cells in 100 µL volume].

### **Data:**

C57BL/6 murine splenocytes are stained with Anti-Mouse CD3ε Monoclonal Antibody (AF488 Conjugated)[Used at 0.2 µg/10<sup>6</sup> cells

dilution](filled gray histogram). Unstained splenocytes (empty black histogram) are used as control.



### Storage:

Keep as concentrated solution.

Store at 2~8°C and protected from prolonged exposure to light. Do not freeze.

This product is guaranteed up to one year from purchase.