

**Manufacturer/Supplier:**

WUXI DONGLIN SCI&TECH DEVELOPMENT CO., LTD

**Address:** A1-203 Mingpin CityII, No.8 Xihudong Road, Liangxi District  
Wuxi Jiangsu Province, China

TELE: 86-510-82732223

FAX: 86-510-82720101-8014

**Web :** [www.dldevelop.com](http://www.dldevelop.com)

Email: [info@dldevelop.com.cn](mailto:info@dldevelop.com.cn)    [service@dldevelop.com.cn](mailto:service@dldevelop.com.cn)

**Product name:** Anti-Rat CD8a Monoclonal Antibody(FITC  
Conjugated)

**Catalog:** DL21165F

**Synonyms:** T-cell surface glycoprotein CD8 alpha  
chain, CD8A, T-lymphocyte differentiation antigen  
T8/Leu-2, MAL

**Background:** CD8a is a 32 kD glycoprotein also known as T8, Lyt2, Ly-2, and CD8 $\alpha$ . CD8a is a member of the immunoglobulin superfamily expressed on most thymocytes, subset of mature T cells, most NK cells, macrophages, and some activated CD4<sup>+</sup> T cells (not resting). CD8a forms heterodimers with the CD8 $\beta$  chain (CD8b) on the surface of most thymocytes, while mature peripheral T lymphocytes express almost exclusively the CD8  $\alpha\beta$  heterodimer.

Intestinal intraepithelial lymphocytes express CD8a without CD8b. CD8 is an antigen co-receptor on T cells that interacts with MHC class I on antigen-presenting cells or epithelial cells. CD8 participates in T cell activation through its association with the T cell receptor complex and protein tyrosine kinase lck (p56lck).

**Form:** Liquid

**Isotype:** Mouse IgG1,  $\kappa$

**Size:** 25 $\mu$ g/100 $\mu$ g

**Host:** Mouse

**Reactivity:** Rat

**Application:** FCM

**Concentration:** 0.5 mg/mL

**Conjugation:** FITC

**SwissProt:** P07725

**Buffer:** Phosphate buffered solution, pH 7.2, containing 0.09% stabilizer and 1% protein protectant.

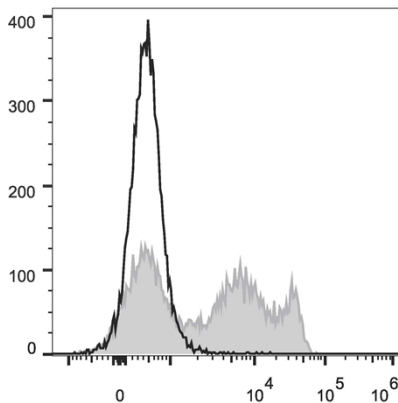
### **Recommended Use:**

Each lot of this antibody is quality control tested by flow cytometric analysis. Please check your vial before the experiment. Since applications vary, the appropriate dilutions must be determined for

individual use. We suggest each investigator should titrate the reagent to obtain optimal results [The recommended concentration is 0.1-1  $\mu\text{g}/10^6$  cells in 100  $\mu\text{L}$  volume].

### Data:

Rat splenocytes are stained with Anti-Rat CD8a Monoclonal Antibody(FITC Conjugated)[Used at 0.6  $\mu\text{g}/10^6$  cells dilution](filled gray histogram). Unstained splenocytes (empty black histogram) are used as control.



### Storage:

Keep as concentrated solution.

Store at 2~8°C and protected from prolonged exposure to light. Do not freeze.

This product is guaranteed up to one year from purchase.