

**Manufacturer/Supplier:**

WUXI DONGLIN SCI&TECH DEVELOPMENT CO., LTD

**Address:** A1-203 Mingpin CityII, No.8 Xihudong Road, Liangxi District  
Wuxi Jiangsu Province, China

TELE: 86-510-82732223

FAX: 86-510-82720101-8014

**Web :** [www.dldevelop.com](http://www.dldevelop.com)

Email: [info@dldevelop.com.cn](mailto:info@dldevelop.com.cn)    [service@dldevelop.com.cn](mailto:service@dldevelop.com.cn)

**Product name:** Anti-Mouse CD106 Monoclonal  
Antibody(PE/Cyanine5 Conjugated)

**Catalog:** DL21044F

**Synonyms:** Vascular cell adhesion protein 1, Vcam1, V-CAM  
1, VCAM-1, CD106

**Background:** CD106 is a 110 kD glycosylphosphatidylinositol (GPI)-linked transmembrane protein, also known as VCAM-1 and INCAM-110. It is constitutively expressed on bone marrow stromal cells, myeloid progenitors, splenic dendritic cells, activated endothelial cells, as well as some lymphocytes. CD106 expression can be upregulated on endothelial cells by inflammatory cytokines. CD106 is involved in adhesion and acts as a counter-receptor for VLA-4 ( $\alpha 4/\beta 1$  integrin) and LPAM-1 ( $\alpha 4/\beta 7$  integrin).

**Form:** Liquid

**Isotype:** Rat IgG1,  $\kappa$

**Size:** 25 $\mu$ g/100 $\mu$ g

**Host:** Rat

**Reactivity:** Mouse

**Application:** FCM

**Concentration:** 0.2 mg/mL

**Conjugation:** PE/Cyanine5

**SwissProt:** P29533

**Buffer:** Phosphate buffered solution, pH 7.2, containing 0.09% stabilizer and 1% protein protectant.

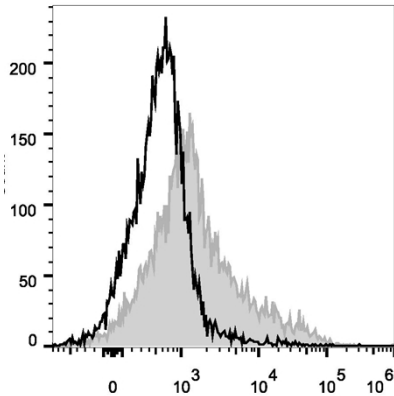
### Recommended Use:

Each lot of this antibody is quality control tested by flow cytometric analysis. Please check your vial before the experiment. Since applications vary, the appropriate dilutions must be determined for individual use. We suggest each investigator should titrate the reagent to obtain optimal results [The recommended concentration is 0.1-1  $\mu$ g/10<sup>6</sup> cells in 100  $\mu$ L volume].

### Data:

C57BL/6 murine bone marrow cells are stained with Anti-Mouse CD106 Monoclonal Antibody(PE/Cyanine5 Conjugated)[Used at 0.2  $\mu$ g/10<sup>6</sup> cells dilution](filled gray histogram). Unstained bone marrow

cells (empty black histogram) are used as control.



### Storage:

Keep as concentrated solution.

Store at 2~8°C and protected from prolonged exposure to light. Do not freeze.

This product is guaranteed up to one year from purchase.