

**Manufacturer/Supplier:**

WUXI DONGLIN SCI&TECH DEVELOPMENT CO., LTD

**Address:** A1-203 Mingpin CityII, No.8 Xihudong Road, Liangxi District  
Wuxi Jiangsu Province, China

TELE: 86-510-82732223

FAX: 86-510-82720101-8014

**Web :** [www.dldevelop.com](http://www.dldevelop.com)

Email: [info@dldevelop.com.cn](mailto:info@dldevelop.com.cn)    [service@dldevelop.com.cn](mailto:service@dldevelop.com.cn)

**Product name:** Anti-Mouse CD103 Monoclonal  
Antibody(PE/Cyanine5 Conjugated)

**Catalog:** DL21013F

**Synonyms:** Integrin alpha-E, Itgae, Integrin alpha M290, CD103

**Background:** CD103 is a type I transmembrane glycoprotein known as  $\alpha$ E integrin or Integrin  $\alpha$ IEL chain. It belongs to the integrin family and is primarily found on intestinal intraepithelial lymphocytes (IEL). CD103 is also expressed on a subpopulation of lamina propria T cells, epithelial dendritic cells, lamina propria-derived dendritic cells, and a small subset of peripheral lymphocytes. T regulatory cells express high level of CD103. The CD103 expression on lymphocytes can be induced upon activation and TGF- $\beta$  stimulation. In association with integrin  $\beta$ 7,

CD103 is expressed as  $\alpha E/\beta 7$  heterodimer. Mature CD103 protein can be cleaved into 2 chains, a 150 kD (C-terminal) chain and a 25 kD (N-terminal) chain, which remain linked by disulfide bonds. CD103 binds to E-cadherin and mediates homing of lymphocytes to the intestinal epithelium.

**Form:** Liquid

**Isotype:** Rat IgG2a,  $\kappa$

**Size:**

**Host:** Rat

50Tests/100Tests/100Tests $\times$ 2

**Reactivity:** Mouse

**Application:** FCM

**Concentration:** 5  $\mu$ L

**Conjugation:** PE/Cyanine5

**SwissProt:** Q60677

**Buffer:** Phosphate buffered solution, pH 7.2, containing 0.09% stabilizer and 1% protein protectant.

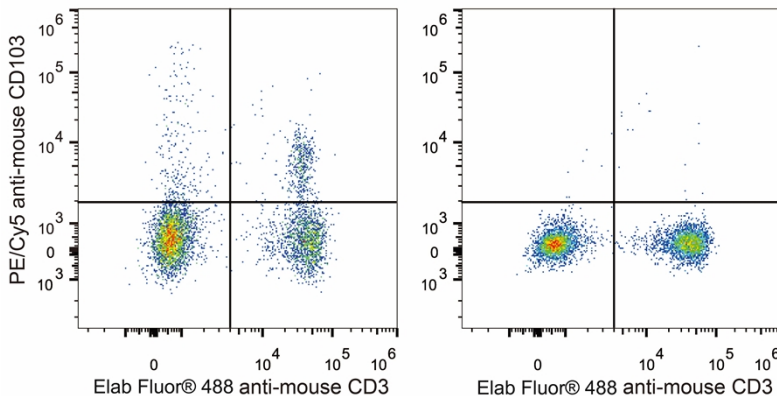
### Recommended Use:

Each lot of this antibody is quality control tested by flow cytometric analysis. The amount of the reagent is suggested to be used 5  $\mu$ L of antibody per test (million cells in 100  $\mu$ L staining volume or per 100  $\mu$ L of whole blood). Please check your vial before the experiment.

Since applications vary, the appropriate dilutions must be determined for individual use.

### Data:

C57BL/6 murine splenocytes are stained with Anti-Mouse CD103 Monoclonal Antibody(PE/Cyanine5 Conjugated)(filled gray histogram). Unstained splenocytes (empty black histogram) are used as control.



### Storage:

Keep as concentrated solution.

Store at 2~8°C and protected from prolonged exposure to light. Do not freeze.

This product is guaranteed up to one year from purchase.