

Manufacturer/Supplier:

WUXI DONGLIN SCI&TECH DEVELOPMENT CO., LTD

Address: A1-203 Mingpin CityII, No.8 Xihudong Road, Liangxi District
Wuxi Jiangsu Province, China

TELE: 86-510-82732223

FAX: 86-510-82720101-8014

Web : www.dldevelop.com

Email: info@dldevelop.com.cn service@dldevelop.com.cn

Product name: Anti-Human CD64 Monoclonal Antibody(AF488
Conjugated)

Catalog: DL20966F

Synonyms: Fc fragment of IgG high affinity Ia/b/c
receptor, CD64A/B/C, CD64, Fc gamma
RI, FCGR1A/B/C, IGFR 1

Background: CD64 is a 72 kD single chain type I glycoprotein also known as FcγRI and FcR I. CD64 is a member of the immunoglobulin superfamily and is expressed on monocytes/macrophages, dendritic cells, and activated granulocytes. The expression can be upregulated by IFN-γ stimulation. CD64 binds IgG immune complex. It plays a role in antigen capture, phagocytosis of IgG/antigen complexes, and antibody-dependent cellular cytotoxicity (ADCC).

Form: Liquid

Isotype: Mouse IgG1, κ

Size:

20Tests/100Tests/100Tests \times 2

Host: Mouse

Reactivity: Human

Application: FCM

Concentration: 5 μ L

Conjugation: AF488

SwissProt: A6NKC4,P12314,Q92637

Buffer: Phosphate buffered solution, pH 7.2, containing 0.09% stabilizer and 1% protein protectant.

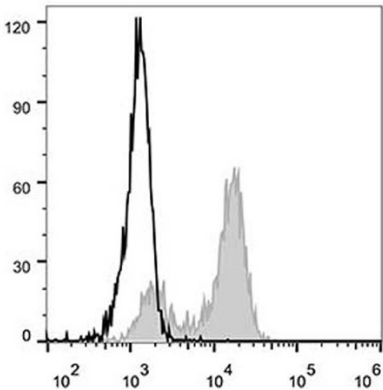
Recommended Use:

Each lot of this antibody is quality control tested by flow cytometric analysis. The amount of the reagent is suggested to be used 5 μ L of antibody per test (million cells in 100 μ L staining volume or per 100 μ L of whole blood). Please check your vial before the experiment. Since applications vary, the appropriate dilutions must be determined for individual use.

Data:

Human peripheral blood monocytes are stained with Anti-Human CD64 Monoclonal Antibody (AF488 Conjugated)(filled gray histogram). Unstained monocytes (empty black histogram) are used as

control.



Storage:

Keep as concentrated solution.

Store at 2~8°C and protected from prolonged exposure to light. Do not freeze.

This product is guaranteed up to one year from purchase.