

**Manufacturer/Supplier:**

WUXI DONGLIN SCI&TECH DEVELOPMENT CO., LTD

**Address:** A1-203 Mingpin CityII, No.8 Xihudong Road, Liangxi District  
Wuxi Jiangsu Province, China

TELE: 86-510-82732223

FAX: 86-510-82720101-8014

**Web :** [www.dldevelop.com](http://www.dldevelop.com)

Email: [info@dldevelop.com.cn](mailto:info@dldevelop.com.cn)    [service@dldevelop.com.cn](mailto:service@dldevelop.com.cn)

**Product name:** Anti-Mouse/Human CD11b Monoclonal  
Antibody(AF647 Conjugated)

**Catalog:** DL20955F

**Synonyms:** Integrin alpha-M, Itgam, CD11 antigen-like family  
member B, CR-3 alpha chain, Leukocyte adhesion  
receptor MO1, CD11b

**Background:** CD11b is a 170 kD glycoprotein also known as  $\alpha$ M  
integrin, Mac-1  $\alpha$  subunit, Mol, CR3, and Ly-40.  
CD11b is a member of the integrin family, primarily  
expressed on granulocytes, monocytes/macrophages,  
dendritic cells, NK cells, and subsets of T and B  
cells. CD11b non-covalently associates with CD18  
( $\beta$ 2 integrin) to form Mac-1. Mac-1 plays an  
important role in cell-cell interaction by binding its  
ligands ICAM-1 (CD54), ICAM-2 (CD102),

ICAM-4 (CD242), iC3b, and fibrinogen.

**Form:** Liquid

**Isotype:** Rat IgG2b,  $\kappa$

**Size:** 25 $\mu$ g/100 $\mu$ g

**Host:** Rat

**Reactivity:** Human, Mouse

**Application:** FCM

**Concentration:** 0.5 mg/mL

**Conjugation:** AF647

**SwissProt:** P05555,P11215

**Buffer:** Phosphate buffered solution, pH 7.2, containing 0.09% stabilizer and 1% protein protectant.

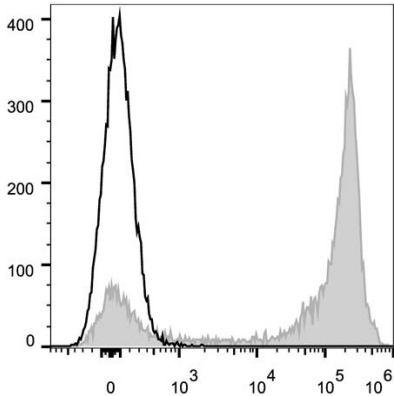
### Recommended Use:

Each lot of this antibody is quality control tested by flow cytometric analysis. Please check your vial before the experiment. Since applications vary, the appropriate dilutions must be determined for individual use. We suggest each investigator should titrate the reagent to obtain optimal results [The recommended concentration is 0.1-1  $\mu$ g/10<sup>6</sup>cells in 100  $\mu$ L volume].

### Data:

C57BL/6 murine bone marrow cells are stained with Anrti-Mouse/Human CD11b Monoclonal Antibody(AF647

Conjugated)[Used at  $0.05 \mu\text{g}/10^6$  cells dilution](filled gray histogram).  
Unstained bone marrow cells (empty black histogram) are used as control.



### Storage:

Keep as concentrated solution.

Store at  $2\sim 8^{\circ}\text{C}$  and protected from prolonged exposure to light. Do not freeze.

This product is guaranteed up to one year from purchase.