

**Manufacturer/Supplier:**

WUXI DONGLIN SCI&TECH DEVELOPMENT CO., LTD

**Address:** A1-203 Mingpin CityII, No.8 Xihudong Road, Liangxi District  
Wuxi Jiangsu Province, China

TELE: 86-510-82732223

FAX: 86-510-82720101-8014

**Web :** [www.dldevelop.com](http://www.dldevelop.com)

Email: [info@dldevelop.com.cn](mailto:info@dldevelop.com.cn)    [service@dldevelop.com.cn](mailto:service@dldevelop.com.cn)

**Product name:** Anti-Mouse/Human CD11b Monoclonal  
Antibody(FITC Conjugated)

**Catalog:** DL20936F

**Synonyms:** Integrin alpha-M, Itgam, CD11 antigen-like family  
member B, CR-3 alpha chain, Leukocyte adhesion  
receptor MO1, CD11b

**Background:** CD11b is a 170 kD glycoprotein also known as  $\alpha$ M  
integrin, Mac-1  $\alpha$  subunit, Mol, CR3, and Ly-40.  
CD11b is a member of the integrin family, primarily  
expressed on granulocytes, monocytes/macrophages,  
dendritic cells, NK cells, and subsets of T and B  
cells. CD11b non-covalently associates with CD18  
( $\beta$ 2 integrin) to form Mac-1. Mac-1 plays an  
important role in cell-cell interaction by binding its  
ligands ICAM-1 (CD54), ICAM-2 (CD102),

ICAM-4 (CD242), iC3b, and fibrinogen.

**Form:** Liquid

**Isotype:** Rat IgG2b,  $\kappa$

**Size:**

**Host:** Rat

50Tests/100Tests/100Tests $\times$ 2

**Reactivity:** Human, Mouse

**Application:** FCM

**Concentration:** 5  $\mu$ L

**Conjugation:** FITC

**SwissProt:** P05555,P11215

**Buffer:** Phosphate buffered solution, pH 7.2, containing 0.09% stabilizer and 1% protein protectant.

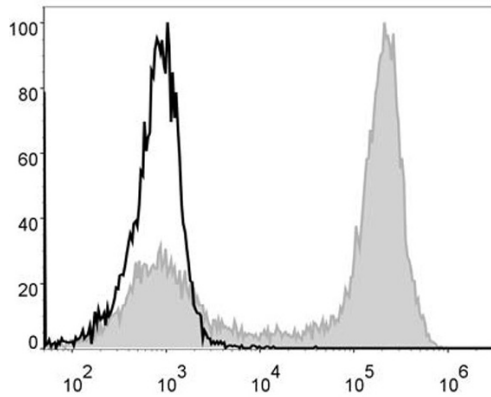
### **Recommended Use:**

Each lot of this antibody is quality control tested by flow cytometric analysis. The amount of the reagent is suggested to be used 5  $\mu$ L of antibody per test (million cells in 100  $\mu$ L staining volume or per 100  $\mu$ L of whole blood). Please check your vial before the experiment. Since applications vary, the appropriate dilutions must be determined for individual use.

### **Data:**

Mouse bone marrow cells are stained with Anti-Mouse/Human CD11b Monoclonal Antibody(FITC Conjugated)(filled gray histogram).

Unstained bone marrow cells (blank black histogram) are used as control.



**Storage:**

Keep as concentrated solution.

Store at 2~8°C and protected from prolonged exposure to light. Do not freeze.

This product is guaranteed up to one year from purchase.