

**Manufacturer/Supplier:**

WUXI DONGLIN SCI&TECH DEVELOPMENT CO., LTD

**Address:** A1-203 Mingpin CityII, No.8 Xihudong Road, Liangxi District  
Wuxi Jiangsu Province, China

TELE: 86-510-82732223

FAX: 86-510-82720101-8014

**Web :** [www.dldevelop.com](http://www.dldevelop.com)

Email: [info@dldevelop.com.cn](mailto:info@dldevelop.com.cn)    [service@dldevelop.com.cn](mailto:service@dldevelop.com.cn)

**Product name:** Anti-Human CD35 Monoclonal Antibody(AF488  
Conjugated)

**Catalog:** DL20803F

**Synonyms:** Complement receptor type 1, CR1, C3b/C4b  
receptor, CD35, CR1, C3BR

**Background:** CD35 is a type I single chain of glycoprotein, also known as C3b/C4b receptor, Complement Receptor type 1 or CR1. Four molecular weight allotypes (160kD, 190kD, 220kD, and 250kD) have been described. CD35 is expressed on granulocytes, monocytes, B cells, erythrocytes, and follicular dendritic cells, as well as subsets of NK and T cells. CD35 binds complement C3b, C4b, or iC3, and iC4, and plays important roles in both innate and adoptive immune response via mediating phagocytosis by

granulocytes and monocytes. CD35 has also been reported to inhibit T- cell proliferation.

**Form:** Liquid

**Isotype:** Mouse IgG1,  $\kappa$

**Size:**

20Tests/100Tests/100Tests $\times$ 2

**Host:** Mouse

**Reactivity:** Human

**Application:** FCM

**Concentration:** 5  $\mu$ L

**Conjugation:** AF488

**SwissProt:** P17927

**Buffer:** Phosphate buffered solution, pH 7.2, containing 0.09% stabilizer and 1% protein protectant.

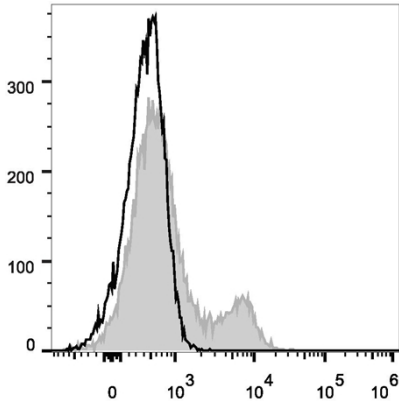
### Recommended Use:

Each lot of this antibody is quality control tested by flow cytometric analysis. The amount of the reagent is suggested to be used 5  $\mu$ L of antibody per test (million cells in 100  $\mu$ L staining volume or per 100  $\mu$ L of whole blood). Please check your vial before the experiment. Since applications vary, the appropriate dilutions must be determined for individual use.

### Data:

Human peripheral blood lymphocytes are stained with Anti-Human

CD35 Monoclonal Antibody(AF488 Conjugated)(filled gray histogram).  
Unstained lymphocytes (empty black histogram) are used as control.



### Storage:

Keep as concentrated solution.

Store at 2~8°C and protected from prolonged exposure to light. Do not freeze.

This product is guaranteed up to one year from purchase.