

**Manufacturer/Supplier:**

WUXI DONGLIN SCI&TECH DEVELOPMENT CO., LTD

**Address:** A1-203 Mingpin CityII, No.8 Xihudong Road, Liangxi District  
Wuxi Jiangsu Province, China

TELE: 86-510-82732223

FAX: 86-510-82720101-8014

**Web :** [www.dldevelop.com](http://www.dldevelop.com)

Email: [info@dldevelop.com.cn](mailto:info@dldevelop.com.cn)    [service@dldevelop.com.cn](mailto:service@dldevelop.com.cn)

**Product name:** Anti-Human CD48 Monoclonal  
Antibody(PE/Cyanine5 Conjugated)

**Catalog:** DL20790F

**Synonyms:** CD48 antigen, Cd48, BCM1 surface  
antigen, BLAST-1, HM48-1, MRC OX-45 surface  
antigen, SLAMF2, sgp-60, CD48

**Background:** CD48 is a 40-47 kD GPI-anchored membrane protein, also known as Blast-1 and HuLy-m3. It is a member of the CD2 family that contains 2 IgSF domains and is widely expressed on both resting and activated hematopoietic cells with the exception of granulocytes, platelets, and erythrocytes. CD48 binds to CD2 at a considerably (>100-fold) lower affinity than CD58. It is thought to contribute to T cell activation. The cytoplasmic tail of CD48 has been

shown to bind to the kinases Lck and Fyn.

**Form:** Liquid

**Isotype:** Mouse IgG1,  $\kappa$

**Size:**

**Host:** Mouse

20Tests/100Tests/100Tests $\times$ 2

**Reactivity:** Human

**Application:** FCM

**Concentration:** 5  $\mu$ L

**Conjugation:** PE/Cyanine5

**SwissProt:** P09326

**Buffer:** Phosphate buffered solution, pH 7.2, containing 0.09% stabilizer and 1% protein protectant.

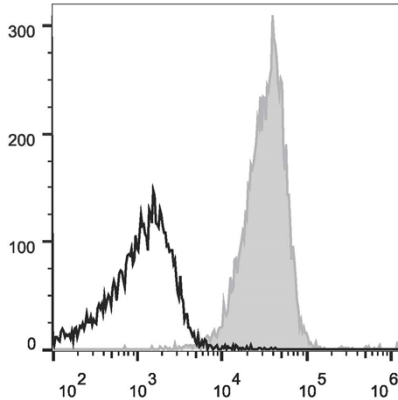
### **Recommended Use:**

Each lot of this antibody is quality control tested by flow cytometric analysis. The amount of the reagent is suggested to be used 5  $\mu$ L of antibody per test (million cells in 100  $\mu$ L staining volume or per 100  $\mu$ L of whole blood). Please check your vial before the experiment. Since applications vary, the appropriate dilutions must be determined for individual use.

### **Data:**

Human peripheral blood lymphocytes are stained with Anti-Human CD48 Monoclonal Antibody(PE/Cyanine5

Conjugated)(filled gray histogram) or Mouse IgG1 Isotype Control PE/Cy5 (empty black histogram).



### Storage:

Keep as concentrated solution.

Store at 2~8°C and protected from prolonged exposure to light. Do not freeze.

This product is guaranteed up to one year from purchase.