

**Manufacturer/Supplier:**

WUXI DONGLIN SCI&TECH DEVELOPMENT CO., LTD

**Address:** A1-203 Mingpin CityII, No.8 Xihudong Road, Liangxi District  
Wuxi Jiangsu Province, China

TELE: 86-510-82732223

FAX: 86-510-82720101-8014

**Web :** [www.dldevelop.com](http://www.dldevelop.com)

Email: [info@dldevelop.com.cn](mailto:info@dldevelop.com.cn)    [service@dldevelop.com.cn](mailto:service@dldevelop.com.cn)

**Product name:** Anti-Human CD62L Monoclonal Antibody(AF488  
Conjugated)

**Catalog:** DL20710F

**Synonyms:** L-selectin, Sell, CD62 antigen-like family member  
L, LAM-1, LECAM1, Lymph node homing  
receptor, Ly-22, CD62L, Lnh, Ly22

**Background:** CD62L is a 74-95 kD single chain type I  
glycoprotein referred to as L-selectin or LECAM-1.  
It is expressed on most peripheral blood B cells,  
subsets of T and NK cells, monocytes, granulocytes,  
and certain hematopoietic malignant cells. CD62L  
binds to carbohydrates present on certain glycoforms  
of CD34, glycam-1, and MADCAM-1 and with a low  
affinity to anionic oligosaccharide sequences related  
to sialylated Lewis X (sLex, CD15s) through its

C-type lectin domain. CD62L is important for the homing of naïve lymphocytes to high endothelial venules in peripheral lymph nodes and Peyer's patches. It also plays a role in leukocyte rolling on activated endothelial cells.

**Form:** Liquid

**Isotype:** Mouse IgG1,  $\kappa$

**Size:**

20Tests/100Tests/100Tests $\times$ 2

**Host:** Mouse

**Reactivity:** Human

**Application:** FCM

**Concentration:** 5  $\mu$ L

**Conjugation:** AF488

**SwissProt:** P14151

**Buffer:** Phosphate buffered solution, pH 7.2, containing 0.09% stabilizer and 1% protein protectant.

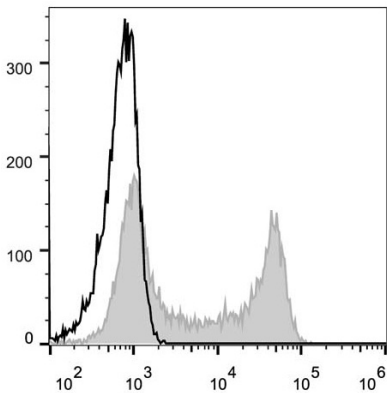
### **Recommended Use:**

Each lot of this antibody is quality control tested by flow cytometric analysis. The amount of the reagent is suggested to be used 5  $\mu$ L of antibody per test (million cells in 100  $\mu$ L staining volume or per 100  $\mu$ L of whole blood). Please check your vial before the experiment. Since applications vary, the appropriate dilutions must be determined

for individual use.

**Data:**

Human peripheral blood lymphocytes are stained with Anti-Human CD62L Monoclonal Antibody (AF488 Conjugated)(filled gray histogram). Unstained lymphocytes (empty black histogram) are used as control.



**Storage:**

Keep as concentrated solution.

Store at 2~8°C and protected from prolonged exposure to light. Do not freeze.

This product is guaranteed up to one year from purchase.