

**Manufacturer/Supplier:**

WUXI DONGLIN SCI&TECH DEVELOPMENT CO., LTD

**Address:** A1-203 Mingpin CityII, No.8 Xihudong Road, Liangxi District  
Wuxi Jiangsu Province, China

TELE: 86-510-82732223

FAX: 86-510-82720101-8014

**Web :** [www.dldevelop.com](http://www.dldevelop.com)

Email: [info@dldevelop.com.cn](mailto:info@dldevelop.com.cn)    [service@dldevelop.com.cn](mailto:service@dldevelop.com.cn)

**Product name:** Anti-Human CD29 Monoclonal Antibody(AF488  
Conjugated)

**Catalog:** DL20686F

**Synonyms:** Integrin beta-1, ITB1, Itgb1, Fibronectin receptor  
subunit beta, VLA-4 subunit beta, CD29

**Background:** CD29 is a 130 kD single chain type I glycoprotein also known as integrin  $\beta 1$ , VLA- $\beta$  chain, or gpIIa. It is broadly expressed on a majority of hematopoietic and non-hematopoietic cells, including leukocytes (although at low level on granulocytes), platelets, fibroblasts, endothelial cells, epithelial cells, and mast cells. CD29 is a member of the integrin family. It is non-covalently associated with integrin  $\alpha 1$ - $\alpha 6$  chains to form VLA-1 to VLA-6 molecules, respectively. Integrins, which include CD29, bind to

several cell surface (e.g. VCAM-1, MadCAM-1) and extracellular matrix molecules. CD29 acts as a fibronectin receptor and is involved in a variety of cell-cell and cell-matrix interactions.

**Form:** Liquid

**Isotype:** Mouse IgG1,  $\kappa$

**Size:**

**Host:** Mouse

20Tests/100Tests/100Tests $\times$ 2

**Reactivity:** Human

**Application:** FCM

**Concentration:** 5  $\mu$ L

**Conjugation:** AF488

**SwissProt:** P05556

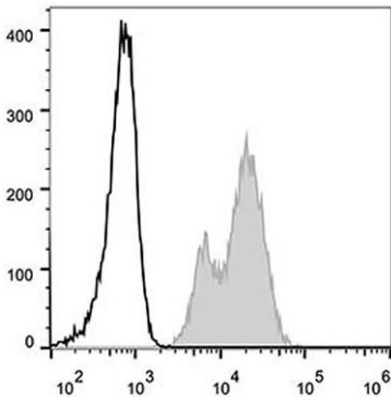
**Buffer:** Phosphate buffered solution, pH 7.2, containing 0.09% stabilizer and 1% protein protectant.

### **Recommended Use:**

Each lot of this antibody is quality control tested by flow cytometric analysis. The amount of the reagent is suggested to be used 5  $\mu$ L of antibody per test (million cells in 100  $\mu$ L staining volume or per 100  $\mu$ L of whole blood). Please check your vial before the experiment. Since applications vary, the appropriate dilutions must be determined for individual use.

### Data:

Human peripheral blood lymphocytes are stained with Anti-Human CD29 Monoclonal Antibody (AF488 Conjugated)(filled gray histogram). Unstained lymphocytes (empty black histogram) are used as control.



### Storage:

Keep as concentrated solution.

Store at 2~8°C and protected from prolonged exposure to light. Do not freeze.

This product is guaranteed up to one year from purchase.