

Manufacturer/Supplier:

WUXI DONGLIN SCI&TECH DEVELOPMENT CO., LTD

Address: A1-203 Mingpin CityII, No.8 Xihudong Road, Liangxi District
Wuxi Jiangsu Province, China

TELE: 86-510-82732223

FAX: 86-510-82720101-8014

Web : www.dldevelop.com

Email: info@dldevelop.com.cn service@dldevelop.com.cn

Product name: Anti-Human CD22 Monoclonal Antibody(AF488
Conjugated)

Catalog: DL20674F

Synonyms: B-cell receptor CD22, Cd22, B-lymphocyte cell
adhesion molecule, BL-CAM, Sialic acid-binding
Ig-like lectin 2, Siglec-2, T-cell surface antigen
Leu-14, CD22, Lyb-8, Siglec2

Background: CD22 is a 130 kD type I transmembrane glycoprotein
also known as Siglec-2 and BL-CAM. It is a member
of the immunoglobulin superfamily (sialoadhesion
subgroup). CD22 is expressed in the cytoplasm of
pro-B and pre-B cells, and on the surface of mature B
and activated B cells, but not on plasma cells. CD22
is present in the B cell receptor complex and
associates with SHP-1, Syk, Lck, Lyn, and

phospholipase C γ 1. A primary function of CD22 is thought to be in limiting antigen receptor signaling by modulating B cell activation threshold. CD22 has been shown to bind to CD45RO and CD75, although the natural ligands for this molecule remain controversial.

Form: Liquid

Isotype: Mouse IgG1, κ

Size:

20Tests/100Tests/100Tests \times 2

Host: Mouse

Reactivity: Human

Application: FCM

Concentration: 5 μ L

Conjugation: AF488

SwissProt: P20273

Buffer: Phosphate buffered solution, pH 7.2, containing 0.09% stabilizer and 1% protein protectant.

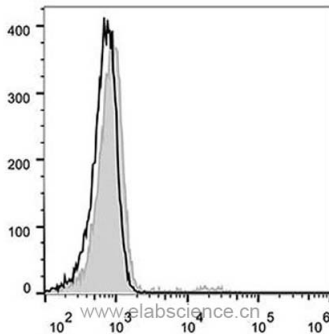
Recommended Use:

Each lot of this antibody is quality control tested by flow cytometric analysis. The amount of the reagent is suggested to be used 5 μ L of antibody per test (million cells in 100 μ L staining volume or per 100 μ L of whole blood). Please check your vial before the experiment.

Since applications vary, the appropriate dilutions must be determined for individual use.

Data:

Human peripheral blood lymphocytes are stained with Anti-Human CD22 Monoclonal Antibody (AF488 Conjugated)(filled gray histogram). Unstained lymphocytes (empty black histogram) are used as control.



Storage:

Keep as concentrated solution.

Store at 2~8°C and protected from prolonged exposure to light. Do not freeze.

This product is guaranteed up to one year from purchase.