

**Manufacturer/Supplier:**

WUXI DONGLIN SCI&TECH DEVELOPMENT CO., LTD

**Address:** A1-203 Mingpin CityII, No.8 Xihudong Road, Liangxi District  
Wuxi Jiangsu Province, China

TELE: 86-510-82732223

FAX: 86-510-82720101-8014

**Web :** [www.dldevelop.com](http://www.dldevelop.com)

Email: [info@dldevelop.com.cn](mailto:info@dldevelop.com.cn)    [service@dldevelop.com.cn](mailto:service@dldevelop.com.cn)

**Product name:** Anti-Human CD21 Monoclonal Antibody(AF488  
Conjugated)

**Catalog:** DL20662F

**Synonyms:** Complement receptor type 2, CR2, Cr2, Complement  
C3d receptor, Epstein-Barr virus receptor, EBV  
receptor, CD21

**Background:** CD21 is a 145 kD transmembrane protein also  
known as complement C3d receptor (C3dR),  
complement receptor 2 (CR2), and Epstein-Barr  
virus receptor. CD21 is expressed on B cells,  
follicular dendritic cells, subsets of normal  
thymocytes and T cells, and some epithelial cells.  
CD21 is the receptor used by Epstein-Barr virus to  
infect B cells and is also the complement receptor for  
C3d. CD21 has also been shown to interact with a

number of proteins, including CD23, CD19, annexin VI, CD81, iC3b, complement receptor 1 (CR1, CD35), and interferon- alpha 1 (IFN- $\alpha$ 1).

**Form:** Liquid

**Isotype:** Mouse IgG1,  $\kappa$

**Size:**

20Tests/100Tests/100Tests $\times$ 2

**Host:** Mouse

**Reactivity:** Human

**Application:** FCM

**Concentration:** 5  $\mu$ L

**Conjugation:** AF488

**SwissProt:** P20023

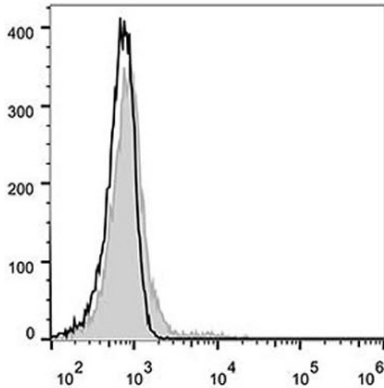
**Buffer:** Phosphate buffered solution, pH 7.2, containing 0.09% stabilizer and 1% protein protectant.

### **Recommended Use:**

Each lot of this antibody is quality control tested by flow cytometric analysis. The amount of the reagent is suggested to be used 5  $\mu$ L of antibody per test (million cells in 100  $\mu$ L staining volume or per 100  $\mu$ L of whole blood). Please check your vial before the experiment. Since applications vary, the appropriate dilutions must be determined for individual use.

**Data:**

Human peripheral blood lymphocytes are stained with Anti-Human CD21 Monoclonal Antibody (AF488 Conjugated)(filled gray histogram). Unstained lymphocytes (empty black histogram) are used as control.



### Storage:

Keep as concentrated solution.

Store at 2~8°C and protected from prolonged exposure to light. Do not freeze.

This product is guaranteed up to one year from purchase.