

**Manufacturer/Supplier:**

WUXI DONGLIN SCI&TECH DEVELOPMENT CO., LTD

**Address:** A1-203 Mingpin CityII, No.8 Xihudong Road, Liangxi District  
Wuxi Jiangsu Province, China

TELE: 86-510-82732223

FAX: 86-510-82720101-8014

**Web :** [www.dldevelop.com](http://www.dldevelop.com)

Email: [info@dldevelop.com.cn](mailto:info@dldevelop.com.cn)    [service@dldevelop.com.cn](mailto:service@dldevelop.com.cn)

**Product name:** Anti-Human CD20 Monoclonal Antibody(PE  
Conjugated)

**Catalog:** DL20643F

**Synonyms:** B-lymphocyte antigen CD20, MS4A1, B-lymphocyte  
surface antigen B1, Bp35, Leukocyte surface antigen  
Leu-16, Membrane-spanning 4-domains subfamily A  
member 1, MS4A1, CD20

**Background:** CD20 is a 33-37 kD, four transmembrane spanning  
protein, also known as B1 and Bp35. CD20 is  
expressed on pre-B-cells, resting and activated B  
cells (not plasma cells), some follicular dendritic  
cells, and at low levels on a T cell subset. CD20 is  
heavily phosphorylated on activated B cells and  
malignant B cells. Homo-oligomeric complexes of  
CD20 are thought to form Ca<sup>2+</sup> conductive ion

channels in the plasma membrane of B cells. The CD20 molecule is involved in B-cell activation and is associated with various Src family kinases (Lyn, Lck, Fyn). It exists in a complex with MHC class I and II, CD53, CD81, and CD82.

**Form:** Liquid

**Isotype:** Mouse IgG2a,  $\kappa$

**Size:**

20Tests/100Tests/100Tests $\times$ 2

**Host:** Mouse

**Reactivity:** Human

**Application:** FCM

**Concentration:** 5  $\mu$ L

**Conjugation:** PE

**SwissProt:** P11836

**Buffer:** Phosphate buffered solution, pH 7.2, containing 0.09% stabilizer and 1% protein protectant.

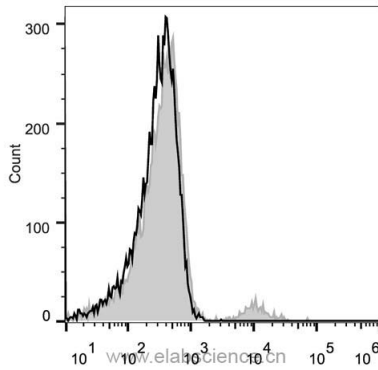
### **Recommended Use:**

Each lot of this antibody is quality control tested by flow cytometric analysis. The amount of the reagent is suggested to be used 5  $\mu$ L of antibody per test (million cells in 100  $\mu$ L staining volume or per 100  $\mu$ L of whole blood). Please check your vial before the experiment. Since applications vary, the appropriate dilutions must be determined

for individual use.

**Data:**

Human peripheral blood lymphocytes are stained with Anti-Human CD20 Monoclonal Antibody(PE Conjugated)(filled gray histogram). Unstained lymphocytes (empty black histogram) are used as control.



**Storage:**

Keep as concentrated solution.

Store at 2~8°C and protected from prolonged exposure to light. Do not freeze.

This product is guaranteed up to one year from purchase.