

Manufacturer/Supplier:

WUXI DONGLIN SCI&TECH DEVELOPMENT CO., LTD

Address: A1-203 Mingpin CityII, No.8 Xihudong Road, Liangxi District
Wuxi Jiangsu Province, China

TELE: 86-510-82732223

FAX: 86-510-82720101-8014

Web : www.dldevelop.com

Email: info@dldevelop.com.cn service@dldevelop.com.cn

Product name: Anti-Human CD20 Monoclonal Antibody(FITC
Conjugated)

Catalog: DL20642F

Synonyms: B-lymphocyte antigen CD20, MS4A1, B-lymphocyte
surface antigen B1, Bp35, Leukocyte surface antigen
Leu-16, Membrane-spanning 4-domains subfamily A
member 1, MS4A1, CD20

Background: CD20 is a 33-37 kD, four transmembrane spanning
protein, also known as B1 and Bp35. CD20 is
expressed on pre-B-cells, resting and activated B
cells (not plasma cells), some follicular dendritic
cells, and at low levels on a T cell subset. CD20 is
heavily phosphorylated on activated B cells and
malignant B cells. Homo-oligomeric complexes of
CD20 are thought to form Ca^{2+} conductive ion

channels in the plasma membrane of B cells. The CD20 molecule is involved in B-cell activation and is associated with various Src family kinases (Lyn, Lck, Fyn). It exists in a complex with MHC class I and II, CD53, CD81, and CD82.

Form: Liquid

Isotype: Mouse IgG2a, κ

Size:

20Tests/100Tests/100Tests \times 2

Host: Mouse

Reactivity: Human

Application: FCM

Concentration: 5 μ L

Conjugation: FITC

SwissProt: P11836

Buffer: Phosphate buffered solution, pH 7.2, containing 0.09% stabilizer and 1% protein protectant.

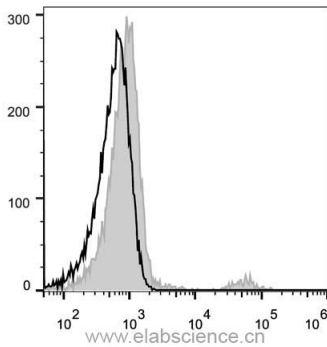
Recommended Use:

Each lot of this antibody is quality control tested by flow cytometric analysis. The amount of the reagent is suggested to be used 5 μ L of antibody per test (million cells in 100 μ L staining volume or per 100 μ L of whole blood). Please check your vial before the experiment. Since applications vary, the appropriate dilutions must be determined

for individual use.

Data:

Human peripheral blood lymphocytes are stained with Anti-Human CD20 Monoclonal Antibody(FITC Conjugated)(filled gray histogram). Unstained lymphocytes (empty black histogram) are used as control.



Storage:

Keep as concentrated solution.

Store at 2~8°C and protected from prolonged exposure to light. Do not freeze.

This product is guaranteed up to one year from purchase.