

Manufacturer/Supplier:

WUXI DONGLIN SCI&TECH DEVELOPMENT CO., LTD

Address: A1-203 Mingpin CityII, No.8 Xihudong Road, Liangxi District
Wuxi Jiangsu Province, China

TELE: 86-510-82732223

FAX: 86-510-82720101-8014

Web : www.dldevelop.com

Email: info@dldevelop.com.cn service@dldevelop.com.cn

Product name: Anti-Human CD5 Monoclonal
Antibody(PE/Cyanine7 Conjugated)

Catalog: DL20611F

Synonyms: T-cell surface glycoprotein CD5, CD5, Lymphocyte
antigen T1/Leu-1, LEU1

Background: CD5 is a 67 kD single chain type I glycoprotein also known as Leu-1, Ly-1 and T1. It is a member of the scavenger receptor superfamily found on T cells, thymocytes, B cell subsets, chronic B lymphocytic leukemia (B-Cells), and peripheral blood dendritic cells. CD5 modulates T and B cell receptor signaling, thymocyte maturation, and T-B cell interactions upon binding to ligands such as CD72.

Form: Liquid

Isotype: Mouse IgG1, κ

Size:

20Tests/100Tests/100Tests×2

Host: Mouse**Reactivity:** Human**Application:** FCM**Concentration:** 5 μ L**Conjugation:** PE/Cyanine7**SwissProt:**

P06127

Buffer:

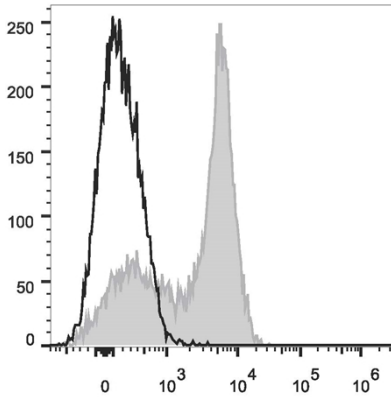
Phosphate buffered solution, pH 7.2, containing 0.09% stabilizer and 1% protein protectant.

Recommended Use:

Each lot of this antibody is quality control tested by flow cytometric analysis. The amount of the reagent is suggested to be used 5 μ L of antibody per test (million cells in 100 μ L staining volume or per 100 μ L of whole blood). Please check your vial before the experiment. Since applications vary, the appropriate dilutions must be determined for individual use.

Data:

Human peripheral blood lymphocytes are stained with Anti-Human CD5 Monoclonal Antibody(PE/Cyanine7 Conjugated)(filled gray histogram). Unstained lymphocytes (empty black histogram) are used as control.



Storage:

Keep as concentrated solution.

Store at 2~8°C and protected from prolonged exposure to light. Do not freeze.

This product is guaranteed up to one year from purchase.