

Manufacturer/Supplier:

WUXI DONGLIN SCI&TECH DEVELOPMENT CO., LTD

Address: A1-203 Mingpin CityII, No.8 Xihudong Road, Liangxi District
Wuxi Jiangsu Province, China

TELE: 86-510-82732223

FAX: 86-510-82720101-8014

Web : www.dldevelop.com

Email: info@dldevelop.com.cn service@dldevelop.com.cn

Product name: Anti-Mouse CD11a Monoclonal
Antibody(PE/Cyanine5 Conjugated)

Catalog: DL20519F

Synonyms: Integrin alpha-L, Itgal, CD11 antigen-like family
member A, LFA-1A, Lymphocyte antigen
15, Ly-15, CD11a

Background: CD11a is a 180 kD glycoprotein, also known as α L integrin, LFA-1 α , Ly-15, or Ly-21. It is a member of the integrin family, primarily expressed on lymphocytes, monocytes/macrophages, and granulocytes. In association with CD18, the CD11a/CD18 complex forms LFA-1. CD11a plays an important role in intercellular adhesion and costimulation by binding its ligands, ICAM-1 (CD54), ICAM-2 (CD102), and ICAM-3 (CD50).

Form: Liquid

Isotype: Rat IgG2b, κ

Size: 25 μ g/100 μ g

Host: Rat

Reactivity: Mouse

Application: FCM

Concentration: 0.2 mg/mL

Conjugation: PE/Cyanine5

SwissProt: P24063

Buffer: Phosphate buffered solution, pH 7.2, containing 0.09% stabilizer and 1% protein protectant.

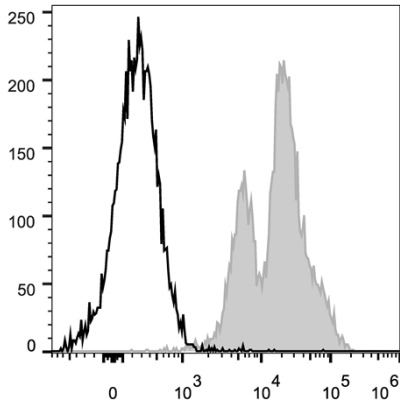
Recommended Use:

Each lot of this antibody is quality control tested by flow cytometric analysis. Please check your vial before the experiment. Since applications vary, the appropriate dilutions must be determined for individual use. We suggest each investigator should titrate the reagent to obtain optimal results [The recommended concentration is 0.1-1 μ g/ 10^6 cells in 100 μ L volume].

Data:

C57BL/6 murine splenocytes are stained with Anti-Mouse CD11a Monoclonal Antibody(PE/Cyanine5 Conjugated)[Used at 0.2 μ g/ 10^6 cells dilution](filled gray histogram). Unstained splenocytes (empty

black histogram) are used as control.



Storage:

Keep as concentrated solution.

Store at 2~8°C and protected from prolonged exposure to light. Do not freeze.

This product is guaranteed up to one year from purchase.