

Manufacturer/Supplier:

WUXI DONGLIN SCI&TECH DEVELOPMENT CO., LTD

Address: A1-203 Mingpin CityII, No.8 Xihudong Road, Liangxi District
Wuxi Jiangsu Province, China

TELE: 86-510-82732223

FAX: 86-510-82720101-8014

Web : www.dldevelop.com

Email: info@dldevelop.com.cn service@dldevelop.com.cn

Product name: Anti-Mouse CD1d Monoclonal Antibody(FITC
Conjugated)

Catalog: DL20492F

Synonyms: Antigen-presenting glycoprotein
CD1d1, Cd1d1, CD1d.1, Cd1d1, Cd1.1

Background: CD1d is a type I transmembrane protein and member of the MHC family, with a molecular weight ranging from 43-49 kD, depending on the glycosylation degree. CD1d is expressed by antigen presenting cells such as dendritic cells, monocytes, macrophages and B cells; also expressed by thymocytes and intestinal epithelial cells. CD1d present glycolipids to iNKT cells that recognize them by their V α 14i TCR.

Form: Liquid

Isotype: Rat IgG2b, κ

Size: 25µg/100µg

Host: Rat

Reactivity: Mouse

Application: FCM

Concentration: 0.5 mg/mL

Conjugation: FITC

SwissProt: P11609

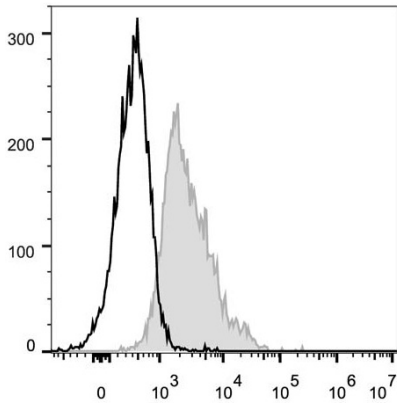
Buffer: Phosphate buffered solution, pH 7.2, containing 0.09% stabilizer and 1% protein protectant.

Recommended Use:

Each lot of this antibody is quality control tested by flow cytometric analysis. Please check your vial before the experiment. Since applications vary, the appropriate dilutions must be determined for individual use. We suggest each investigator should titrate the reagent to obtain optimal results [The recommended concentration is 0.1-1 µg/10⁶cells in 100 µL volume].

Data:

C57BL/6 murine splenocytes are stained with Anti-Mouse CD1d Monoclonal Antibody(FITC Conjugated)[Used at 0.2 µg/10⁶ cells dilution](filled gray histogram). Unstained lymphocytes (empty black histogram) are used as control.



Storage:

Keep as concentrated solution.

Store at 2~8°C and protected from prolonged exposure to light. Do not freeze.

This product is guaranteed up to one year from purchase.