

Manufacturer/Supplier:

WUXI DONGLIN SCI&TECH DEVELOPMENT CO., LTD

Address: A1-203 Mingpin CityII, No.8 Xihudong Road, Liangxi District
Wuxi Jiangsu Province, China

TELE: 86-510-82732223

FAX: 86-510-82720101-8014

Web : www.dldevelop.com

Email: info@dldevelop.com.cn service@dldevelop.com.cn

Product name: Anti-Mouse CD1d Monoclonal Antibody(AF488
Conjugated)

Catalog: DL20490F

Synonyms: Antigen-presenting glycoprotein
CD1d1, Cd1d1, CD1d.1, Cd1d1, Cd1.1

Background: CD1d is a type I transmembrane protein and member of the MHC family, with a molecular weight ranging from 43-49 kD, depending on the glycosylation degree. CD1d is expressed by antigen presenting cells such as dendritic cells, monocytes, macrophages and B cells; also expressed by thymocytes and intestinal epithelial cells. CD1d present glycolipids to iNKT cells that recognize them by their V α 14i TCR.

Form: Liquid

Isotype: Rat IgG2b, κ

Size:

50Tests/100Tests/100Tests×2

Host: Rat**Reactivity:** Mouse**Application:** FCM**Concentration:** 5 μ L**Conjugation:** AF488**SwissProt:** P11609**Buffer:**

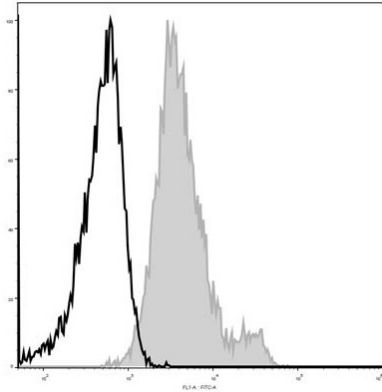
Phosphate buffered solution, pH 7.2, containing 0.09% stabilizer and 1% protein protectant.

Recommended Use:

Each lot of this antibody is quality control tested by flow cytometric analysis. The amount of the reagent is suggested to be used 5 μ L of antibody per test (million cells in 100 μ L staining volume or per 100 μ L of whole blood). Please check your vial before the experiment. Since applications vary, the appropriate dilutions must be determined for individual use.

Data:

C57BL/6 murine splenocytes are stained with Anti-Mouse CD1d Monoclonal Antibody (AF488 Conjugated)(filled gray histogram). Unstained splenocytes (empty black histogram) are used as control.



Storage:

Keep as concentrated solution.

Store at 2~8°C and protected from prolonged exposure to light. Do not freeze.

This product is guaranteed up to one year from purchase.