

Manufacturer/Supplier:

WUXI DONGLIN SCI&TECH DEVELOPMENT CO., LTD

Address: A1-203 Mingpin CityII, No.8 Xihudong Road, Liangxi District
Wuxi Jiangsu Province, China

TELE: 86-510-82732223

FAX: 86-510-82720101-8014

Web : www.dldevelop.com

Email: info@dldevelop.com.cn service@dldevelop.com.cn

Product name: Anti-Mouse CD272 Monoclonal Antibody(PE
Conjugated)

Catalog: DL20414F

Synonyms: B- and T-lymphocyte attenuator, Btla, B- and
T-lymphocyte-associated protein, CD272, Btla

Background: CD272, also known as B and T lymphocyte
attenuator (BTLA), is an Ig superfamily co-inhibitory
receptor with structural similarity to programmed cell
death 1 (PD-1) and CTLA-4. BTLA is expressed on
B cells, T cells, macrophages, dendritic cells, NKT
cells, and NK cells. Engagement of BTLA by its
ligand herpes virus entry mediator (HVEM) is
critical for negatively regulating immune response.
The absence of BTLA with HVEM inhibitory
interactions leads to increased experimental

autoimmune encephalomyelitis severity, enhanced rejection of partially mismatched allografts, an increased CD8⁺ memory T cell population, increased severity of colitis, and reduced effectiveness of T regulatory cells. BTLA plays an important role in the induction of peripheral tolerance of both CD4⁺ and CD8⁺ T cells in vivo. Tolerant T cells have significantly higher expression of BTLA compared with effectors and naïve T cells. BTLA may cooperate with CTLA-4 and PD-1 to control T cell tolerance and autoimmunity. It was reported that BTLA may regulate T cell function by binding to B7-H4, but further studies are needed to confirm. The existence of three distinct BTLA alleles has been reported.

Form: Liquid

Isotype: Rat IgG1, κ

Size: 25 μ g/100 μ g

Host: Rat

Reactivity: Mouse

Application: FCM

Concentration: 0.2 mg/mL

Conjugation: PE

SwissProt: Q7TSA3

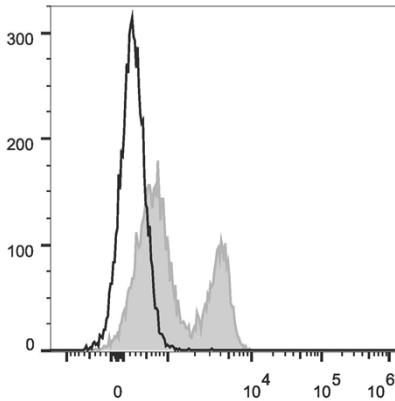
Buffer: Phosphate buffered solution, pH 7.2, containing 0.09% stabilizer and 1% protein protectant.

Recommended Use:

Each lot of this antibody is quality control tested by flow cytometric analysis. Please check your vial before the experiment. Since applications vary, the appropriate dilutions must be determined for individual use. We suggest each investigator should titrate the reagent to obtain optimal results [The recommended concentration is 0.1-1 $\mu\text{g}/10^6\text{cells}$ in 100 μL volume].

Data:

C57BL/6 murine splenocytes are stained with Anti-Mouse CD272 Monoclonal Antibody(PE Conjugated)[Used at 0.2 $\mu\text{g}/10^6\text{cells}$ dilution](filled gray histogram). Unstained splenocytes (empty black histogram) are used as control.



Storage:

Keep as concentrated solution.

Store at 2~8°C and protected from prolonged exposure to light. Do not freeze.

This product is guaranteed up to one year from purchase.