

**Manufacturer/Supplier:**

WUXI DONGLIN SCI&TECH DEVELOPMENT CO., LTD

**Address:** A1-203 Mingpin CityII, No.8 Xihudong Road. Liangxi District  
Wuxi Jiangsu Province, China

TELE: 86-510-82732223

FAX: 86-510-82720101-8014

**Web :** [www.dldevelop.com](http://www.dldevelop.com)

Email: [info@dldevelop.com.cn](mailto:info@dldevelop.com.cn)    [service@dldevelop.com.cn](mailto:service@dldevelop.com.cn)

**Product name:** Anti-Mouse CD272 Monoclonal Antibody(PE  
Conjugated)

**Catalog:** DL20412F

**Synonyms:** B- and T-lymphocyte attenuator, Btla, B- and  
T-lymphocyte-associated protein, CD272, Btla

**Background:** CD272, also known as B and T lymphocyte attenuator (BTLA), is an Ig superfamily co-inhibitory receptor with structural similarity to programmed cell death 1 (PD-1) and CTLA-4. BTLA is expressed on B cells, T cells, macrophages, dendritic cells, NKT cells, and NK cells. Engagement of BTLA by its ligand herpes virus entry mediator (HVEM) is critical for negatively regulating immune response. The absence of BTLA with HVEM inhibitory interactions leads to increased experimental

autoimmune encephalomyelitis severity, enhanced rejection of partially mismatched allografts, an increased CD8<sup>+</sup> memory T cell population, increased severity of colitis, and reduced effectiveness of T regulatory cells. BTLA plays an important role in the induction of peripheral tolerance of both CD4<sup>+</sup> and CD8<sup>+</sup> T cells in vivo. Tolerant T cells have significantly higher expression of BTLA compared with effectors and naïve T cells. BTLA may cooperate with CTLA-4 and PD-1 to control T cell tolerance and autoimmunity. It was reported that BTLA may regulate T cell function by binding to B7-H4, but further studies are needed to confirm. The existence of three distinct BTLA alleles has been reported.

**Form:** Liquid

**Isotype:** Rat IgG1,  $\kappa$

**Size:**

**Host:** Rat

50Tests/100Tests/100Tests $\times$ 2

**Reactivity:** Mouse

**Application:** FCM

**Concentration:** 5  $\mu$ L

**Conjugation:** PE

**SwissProt:** Q7TSA3

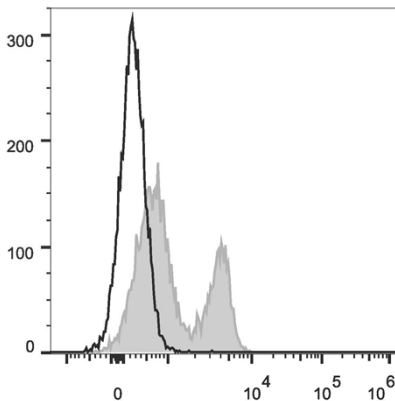
**Buffer:** Phosphate buffered solution, pH 7.2, containing 0.09% stabilizer and 1% protein protectant.

**Recommended Use:**

Each lot of this antibody is quality control tested by flow cytometric analysis. The amount of the reagent is suggested to be used 5  $\mu$ L of antibody per test (million cells in 100  $\mu$ L staining volume or per 100  $\mu$ L of whole blood). Please check your vial before the experiment. Since applications vary, the appropriate dilutions must be determined for individual use.

**Data:**

C57BL/6 murine splenocytes are stained with Anti-Mouse CD272 Monoclonal Antibody(PE Conjugated)(filled gray histogram). Unstained splenocytes (empty black histogram) are used as control.



**Storage:**

Keep as concentrated solution.

Store at 2~8°C and protected from prolonged exposure to light. Do not freeze.

This product is guaranteed up to one year from purchase.