

**Manufacturer/Supplier:**

WUXI DONGLIN SCI&TECH DEVELOPMENT CO., LTD

**Address:** A1-203 Mingpin CityII, No.8 Xihudong Road, Liangxi District  
Wuxi Jiangsu Province, China

TELE: 86-510-82732223

FAX: 86-510-82720101-8014

**Web :** [www.dldevelop.com](http://www.dldevelop.com)

Email: [info@dldevelop.com.cn](mailto:info@dldevelop.com.cn)    [service@dldevelop.com.cn](mailto:service@dldevelop.com.cn)

**Product name:** Anti-Mouse CD3 Monoclonal Antibody(PE  
Conjugated)

**Catalog:** DL20277F

**Synonyms:** T-cell surface glycoprotein CD  
3epsilon/delta/gamma/zeta  
chain, CD3E/D/G/Z, CD3e/d/g/z, CD3E/D/G/Z, CD3

**Background:** CD3, also known as T3, is a member of the Ig superfamily and primarily expressed on T cells, NK-T cells, and at different levels on thymocytes during T cell differentiation. CD3 is composed of CD3 $\epsilon$ ,  $\delta$ ,  $\gamma$  and  $\zeta$  chains. It forms a TCR complex by associating with TCR  $\alpha/\beta$  or  $\gamma/\delta$  chains. CD3 plays a critical role in TCR signal transduction, T cell activation, and antigen recognition by binding the peptide/MHC antigen complex.

**Form:** Liquid

**Isotype:** Rat IgG2b,  $\kappa$

**Size:** 25 $\mu$ g/100 $\mu$ g

**Host:** Rat

**Reactivity:** Mouse

**Application:** FCM

**Concentration:** 0.2 mg/mL

**Conjugation:** PE

**SwissProt:** P04235,P11942,P22646,P24161,P29020

**Buffer:** Phosphate buffered solution, pH 7.2, containing 0.09% stabilizer and 1% protein protectant.

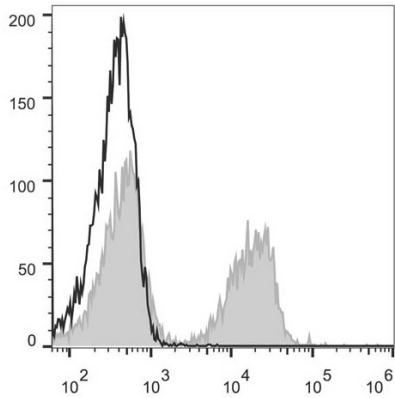
### **Recommended Use:**

Each lot of this antibody is quality control tested by flow cytometric analysis. Please check your vial before the experiment. Since applications vary, the appropriate dilutions must be determined for individual use. We suggest each investigator should titrate the reagent to obtain optimal results [The recommended concentration is 0.1-1  $\mu$ g/10<sup>6</sup>cells in 100  $\mu$ L volume].

### **Data:**

C57BL/6 murine splenocytes are stained with Anti-Mouse CD3 Monoclonal Antibody(PE Conjugated)[Used at 0.04  $\mu$ g/10<sup>6</sup> cells dilution](filled gray histogram). Unstained splenocytes(empty black

histogram) are used as control.



### Storage:

Keep as concentrated solution.

Store at 2~8°C and protected from prolonged exposure to light. Do not freeze.

This product is guaranteed up to one year from purchase.