

Manufacturer/Supplier:

WUXI DONGLIN SCI&TECH DEVELOPMENT CO., LTD

Address: A1-203 Mingpin CityII, No.8 Xihudong Road. Liangxi District
Wuxi Jiangsu Province, China

TELE: 86-510-82732223

FAX: 86-510-82720101-8014

Web : www.dldevelop.com

Email: info@dldevelop.com.cn service@dldevelop.com.cn

Product name: Anti-Human CD3 Monoclonal
Antibody(PE/Cyanine7 Conjugated)

Catalog: DL20183F

Synonyms: T-cell surface glycoprotein CD3 epsilon
chain, CD3E, T-cell surface antigen T3/Leu-4 epsilon
chain, CD3e, CD3E, T3E

Background: CD3 ϵ is a 20 kD chain of the CD3/T cell receptor (TCR) complex, which is composed of two CD3 ϵ , one CD3 γ , one CD3 δ , one CD3 ζ (CD247), and a T cell receptor (α/β or γ/δ) heterodimer. It is found on all mature T lymphocytes, NK T cells, and some thymocytes. CD3, also known as T3, is a member of the immunoglobulin superfamily that plays a role in antigen recognition, signal transduction, and T cell activation.

Form: Liquid

Isotype: Mouse IgG2a, κ

Size:

20Tests/100Tests/100Tests \times 2

Host: Mouse

Reactivity: Human

Application: FCM

Concentration: 5 μ L

Conjugation: PE/Cyanine7

SwissProt: P07766

Buffer: Phosphate buffered solution, pH 7.2, containing 0.09% stabilizer and 1% protein protectant.

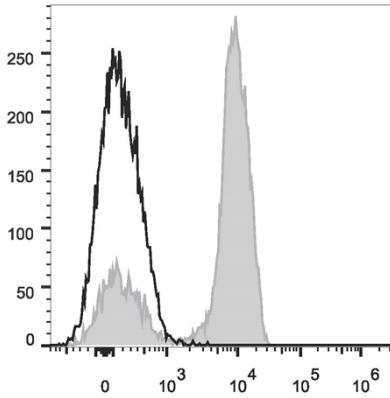
Recommended Use:

Each lot of this antibody is quality control tested by flow cytometric analysis. The amount of the reagent is suggested to be used 5 μ L of antibody per test (million cells in 100 μ L staining volume or per 100 μ L of whole blood). Please check your vial before the experiment. Since applications vary, the appropriate dilutions must be determined for individual use.

Data:

Human peripheral blood lymphocytes are stained with Anti-Human CD3 Monoclonal Antibody(PE/Cyanine7 Conjugated)(filled gray histogram). Unstained lymphocytes (empty black histogram) are used as

control.



Storage:

Keep as concentrated solution.

Store at 2~8°C and protected from prolonged exposure to light. Do not freeze.

This product is guaranteed up to one year from purchase.