

Manufacturer/Supplier:

WUXI DONGLIN SCI&TECH DEVELOPMENT CO., LTD

Address: A1-203 Mingpin CityII, No.8 Xihudong Road, Liangxi District
Wuxi Jiangsu Province, China

TELE: 86-510-82732223

FAX: 86-510-82720101-8014

Web : www.dldevelop.com

Email: info@dldevelop.com.cn service@dldevelop.com.cn

Product name: Anti-Mouse CD16/32 Monoclonal Antibody(PE
Conjugated)

Catalog: DL20147F

Synonyms: CD16a/b, CD32, CD32A/B, Fc fragment of IgG low
affinity IIa/b receptor, Fc fragment of IgG low
affinity IIIa/b receptor, Fc fragment of IgG low
affinity IIIb receptor, Fc gamma receptor III
A/B, FCGR2A, FcGR, FCGR2A/BFCGR3, FCGR3A/B,
Fc gamma RIIa/b

Background: CD16 is low affinity IgG Fc receptor III (FcR III)
and CD32 is FcR II. CD16/CD32 are expressed on B
cells, monocytes/macrophages, NK cells,
granulocytes, mast cells, and dendritic cells. The Fc
receptors bind antibody-antigen immune complexes

and mediate adaptive immune responses.

Form: Liquid

Isotype: Rat IgG2b, κ

Size:

Host: Rat

50Tests/100Tests/100Tests \times 2

Reactivity: Mouse

Application: FCM

Concentration: 5 μ L

Conjugation: PE

SwissProt:

P08101,P08508,Q5D5I8,Q5D5J5,Q7TMW9,Q9ES9
2

Buffer:

Phosphate buffered solution, pH 7.2, containing
0.09% stabilizer and 1% protein protectant.

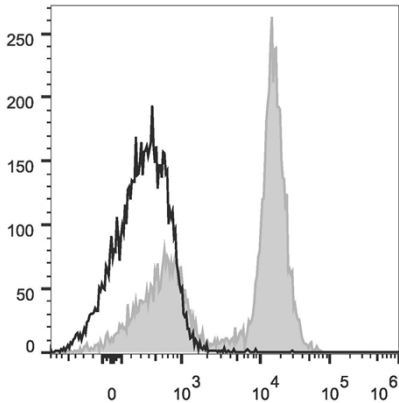
Recommended Use:

Each lot of this antibody is quality control tested by flow cytometric analysis. The amount of the reagent is suggested to be used 5 μ L of antibody per test (million cells in 100 μ L staining volume or per 100 μ L of whole blood). Please check your vial before the experiment. Since applications vary, the appropriate dilutions must be determined for individual use.

Data:

C57BL/6 murine splenocytes are stained with Anti-Mouse

CD16/32 Monoclonal Antibody(PE Conjugated)(filled gray histogram).
Unstained splenocytes (empty black histogram) are used as control.



Storage:

Keep as concentrated solution.

Store at 2~8°C and protected from prolonged exposure to light. Do not freeze.

This product is guaranteed up to one year from purchase.