

**Manufacturer/Supplier:**

WUXI DONGLIN SCI&TECH DEVELOPMENT CO., LTD

**Address:** A1-203 Mingpin CityII, No.8 Xihudong Road, Liangxi District  
Wuxi Jiangsu Province, China

TELE: 86-510-82732223

FAX: 86-510-82720101-8014

**Web :** [www.dldevelop.com](http://www.dldevelop.com)

Email: [info@dldevelop.com.cn](mailto:info@dldevelop.com.cn)    [service@dldevelop.com.cn](mailto:service@dldevelop.com.cn)

**Product name:** Anti-Mouse F4/80 Monoclonal Antibody(FITC  
Conjugated)

**Catalog:** DL20133F

**Synonyms:** Adhesion G protein-coupled receptor E1, Adgre1, Cell  
surface glycoprotein F4/80, EGF-like module  
receptor 1, Adgre1, Emr1, Gpf480

**Background:** F4/80 is a 160 kD glycoprotein. It is characterized as  
a member of the epidermal growth factor  
(EGF)-transmembrane 7 (TM7) family. F4/80, also  
known as EMR1 or Ly71, has been widely used as a  
murine macrophage marker, which is expressed on  
the majority of tissue macrophages including  
peritoneal macrophages, macrophages in lung, gut,  
thymus and red pulp of spleen (but not on the  
macrophages located in T cell areas of the spleen,

lymph node and Peyer's patch), Kuffer cells, Langerhans cells, and bone marrow stromal cells. F4/80 has also been shown on a subset of dendritic cells. The biological ligand of F4/80 has not been identified, but it has been reported that F4/80 is required for induction of CD8<sup>+</sup> T cells-mediated peripheral tolerance.

**Form:** Liquid

**Isotype:** Rat IgG2b,  $\kappa$

**Size:** 25 $\mu$ g/100 $\mu$ g

**Host:** Rat

**Reactivity:** Mouse

**Application:** FCM

**Concentration:** 0.5 mg/mL

**Conjugation:** FITC

**SwissProt:** Q61549

**Buffer:** Phosphate buffered solution, pH 7.2, containing 0.09% stabilizer and 1% protein protectant.

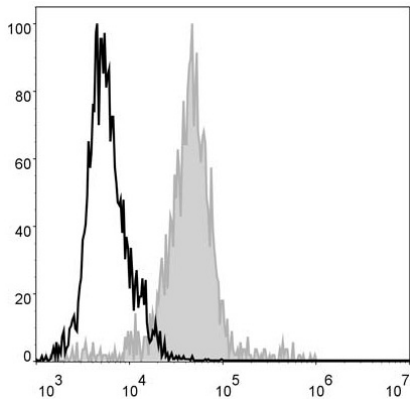
### Recommended Use:

Each lot of this antibody is quality control tested by flow cytometric analysis. Please check your vial before the experiment. Since applications vary, the appropriate dilutions must be determined for

individual use. We suggest each investigator should titrate the reagent to obtain optimal results [The recommended concentration is 0.1-1  $\mu\text{g}/10^6$  cells in 100  $\mu\text{L}$  volume].

### Data:

Mouse abdominal macrophages elicited by starch broth are stained with Anti-Mouse F4/80 Monoclonal Antibody(FITC Conjugated)[Used at 0.2  $\mu\text{g}/10^6$  cells dilution](filled gray histogram). Unstained macrophages (blank black histogram) are used as control.



### Storage:

Keep as concentrated solution.

Store at 2~8°C and protected from prolonged exposure to light. Do not freeze.

This product is guaranteed up to one year from purchase.