

Manufacturer/Supplier:

WUXI DONGLIN SCI&TECH DEVELOPMENT CO., LTD

Address: A1-203 Mingpin CityII, No.8 Xihudong Road, Liangxi District
Wuxi Jiangsu Province, China

TELE: 86-510-82732223

FAX: 86-510-82720101-8014

Web : www.dldevelop.com

Email: info@dldevelop.com.cn service@dldevelop.com.cn

Product name: Anti-Mouse MHC II (I-A/I-E) Monoclonal
Antibody(FITC Conjugated)

Catalog: DL20050F

Synonyms: H2-Ab1/Eb1, Major histocompatibility protein class
II beta chain, MHC class II H2-IA-beta-psi, I-E beta
MHC class II, MHC class II

Background: These class II molecules are expressed on antigen
presenting cells (including B cells) and a subset of T
cells from H-2b,d,q,r bearing mice and are involved
in antigen presentation to T cells expressing
CD3/TCR and CD4 proteins.

Form: Liquid

Isotype: Rat IgG2b, κ

Size:

Host: Rat

50Tests/100Tests/100Tests×2

Reactivity: Mouse

Application: FCM

Concentration: 5 μ L

Conjugation: FITC

SwissProt: P14483,O78196

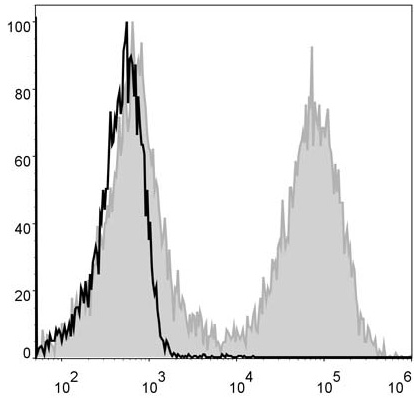
Buffer: Phosphate buffered solution, pH 7.2, containing 0.09% stabilizer and 1% protein protectant.

Recommended Use:

Each lot of this antibody is quality control tested by flow cytometric analysis. The amount of the reagent is suggested to be used 5 μ L of antibody per test (million cells in 100 μ L staining volume or per 100 μ L of whole blood). Please check your vial before the experiment. Since applications vary, the appropriate dilutions must be determined for individual use.

Data:

Mouse splenocytes are stained with Anti-Mouse I-A/I-E Monoclonal Antibody(FITC Conjugated)(filled gray histogram). Unstained splenocytes (blank black histogram) are used as control.



Storage:

Keep as concentrated solution.

Store at 2~8°C and protected from prolonged exposure to light. Do not freeze.

This product is guaranteed up to one year from purchase.